

Anti-EHD2 antibody (244-543) (STJ114811)

GENERAL INFORMATION

Product Type	Primary antibodies
Applications	WB/ELISA
Host / Source	Rabbit
Reactivity	Human/Mouse/Rat

PRODUCT PROPERTIES

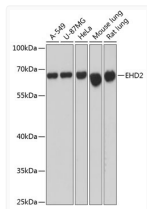
Clonality	Polyclonal
Concentration	Lot specific
Conjugation	Unconjugated
Purification	Affinity purification
Dilution Range	WB:1:1000-1:3000 ELISA: Recommended starting concentration is 1 µg/mL. Please optimize the concentration based on your specific assay requirements.
Formulation	PBS with 0.01% Thimerosal, 50% Glycerol, pH 7.3.
Isotype	IgG
Molecular Weight	Protein Mw: 61kDa Observed Mw: 61kDa
Storage Instruction	Store at -20°C for up to 1 year from the date of receipt, and avoid repeat freeze-thaw cycles.

TARGET INFORMATION

Gene ID	30846
Gene Symbol	EHD2
UniProt ID	EHD2_HUMAN
Immunogen Region	244-543
Immunogen Sequence	VGTPVELRVYIGSFWSQPLL VPDNRRLFELEEQDLFRDIQ GLPRHAALRKLNDLVKRARL VRVHAYIISYLKEMPSVFG KENKKQLILKLPVIFAKIQ LEHHISPGDFPDCQKMQELL MAHDFTKFHSLKPKLLEALD EMLTHDIAKLMPLLRQEELE STEVGVQGGAFEGTHMGPFV ERGPDEAMEDGEEGSDDEAE WVVTKDKSKYDEIFYNLAPA DGKLSGSKAKTWMVGTGLP
Specificity	Recombinant fusion protein containing a sequence corresponding to amino acids 244-543 of human EHD2 (NP_055416.2).

ADDITIONAL INFORMATION

Note **STRICTLY FOR FURTHER SCIENTIFIC RESEARCH USE ONLY (RUO). MUST NOT TO BE USED IN DIAGNOSTIC OR THERAPEUTIC APPLICATIONS.**



Western blot analysis of various lysates using EHD2 Rabbit polyclonal antibody (STJ114811) at 1:3000 dilution. Secondary antibody: HRP Goat Anti-Rabbit IgG (H+L) (STJS000856) at 1:10000 dilution. Lysates/proteins: 25 µg per lane. Blocking buffer: 3% nonfat dry milk in TBST. Detection: ECL Basic Kit. Exposure time: 1s.