

## Anti-TRIM25 antibody (190-630) (STJ114804)

### GENERAL INFORMATION

Product Type	Primary antibodies
Applications	WB/IHC-P/IF/ICC/IP/ELISA
Host / Source	Rabbit
Reactivity	Human/Mouse/Rat

### PRODUCT PROPERTIES

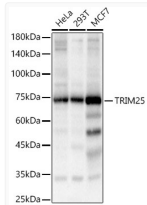
Clonality	Polyclonal
Concentration	Lot specific
Conjugation	Unconjugated
Purification	Affinity purification
Dilution Range	WB:1:500-1:2000 IHC-P:1:50-1:200 IF/ICC:1:50-1:200 IP:0.5 Mu g-4 Mu g antibody for 200 Mu g-400 Mu g extracts of whole cells ELISA:Recommended starting concentration is 1 Mu g/mL. Please optimize the concentration based on your specif
Formulation	PBS with 0.09% Sodium Azide, 50% Glycerol, pH7.3.
Isotype	IgG
Molecular Weight	Protein Mw: 71kDa Observed Mw: 72kDa
Storage Instruction	Store at-20°C for up to 1 year from the date of receipt, and avoid repeat freeze-thaw cycles.

### TARGET INFORMATION

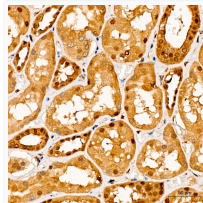
Gene ID	<a href="#">7706</a>
Gene Symbol	<a href="#">TRIM25</a>
UniProt ID	<a href="#">TRI25_HUMAN</a>
Immunogen Region	190-630
Immunogen Sequence	SLSQASADLEATLRHKLTVM YSQINGASRALDDVRNRQQD VRMTANRKVEQLQQEYTEMK ALLDASETTSTRKIKKEEKR VNSKFDTIYQILLKKKSEIQ TLKEEIEQSLTKRDEFEFLE KASKLRGISTKPVVYPEVEL NHKLIKGIHQSTIDLKKNELK QCIGRLQEPTPSSGDPGEHD PASTHKSTRP
Specificity	Recombinant fusion protein containing a sequence corresponding to amino acids 190-379 of human TRIM25 (NP_005073.2).

### ADDITIONAL INFORMATION

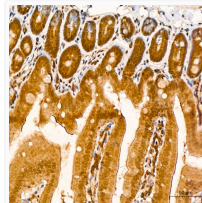
Note STRICTLY FOR FURTHER SCIENTIFIC RESEARCH USE ONLY (RUO). MUST NOT TO BE USED IN DIAGNOSTIC OR THERAPEUTIC APPLICATIONS.



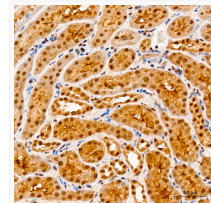
Western blot analysis of various lysates, using TRIM25 rabbit polyclonal antibody (STJ114804) at 1:1500 dilution. Secondary antibody: HRP Goat Anti-rabbit IgG (H+L) (STJS000856) at 1:10000 dilution. Lysates/proteins: 25 Mu g per lane. Blocking buffer: 3% non-fat dry milk in TBST. Detection: ECL Basic Kit. Exposure time: 3s.



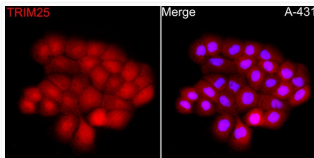
Immunohistochemistry analysis of paraffin-embedded human kidney using TRIM25 rabbit polyclonal antibody (STJ114804) at dilution of 1:100 (40x lens). Perform high pressure antigen retrieval with 10 mM citrate buffer pH 6. 0 before commencing with immunohistochemistry staining protocol.



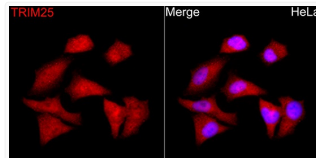
Immunohistochemistry analysis of paraffin-embedded mouse intestine using TRIM25 rabbit polyclonal antibody (STJ114804) at dilution of 1:100 (40x lens). Perform high pressure antigen retrieval with 10 mM citrate buffer pH 6. 0 before commencing with immunohistochemistry staining protocol.



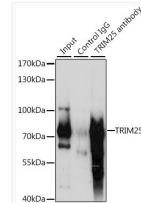
Immunohistochemistry analysis of paraffin-embedded rat kidney using TRIM25 rabbit polyclonal antibody (STJ114804) at dilution of 1:100 (40x lens). Perform high pressure antigen retrieval with 10 mM citrate buffer pH 6. 0 before commencing with immunohistochemistry staining protocol.



Immunofluorescence analysis of A-431 cells using TRIM25 rabbit polyclonal antibody (STJ114804) at dilution of 1:100 (40x lens). Secondary antibody: Cy3 Goat Anti-rabbit IgG (H+L) at 1:500 dilution. Blue: DAPI for nuclear staining.



Immunofluorescence analysis of HeLa cells using TRIM25 rabbit polyclonal antibody (STJ114804) at dilution of 1:100 (40x lens). Secondary antibody: Cy3 Goat Anti-rabbit IgG (H+L) at 1:500 dilution. Blue: DAPI for nuclear staining.



Immunoprecipitation analysis of 200 Mu g extracts of HepG2 cells, using 3 Mu g TRIM25 antibody (STJ114804). Western blot was performed from the immunoprecipitate using TRIM25 antibody (STJ114804) at a dilution of 1:1000.