

## Anti-DRD2 antibody (13-443) (STJ114796)

### GENERAL INFORMATION

Product Type	Primary antibodies
Applications	WB/ELISA
Host / Source	Rabbit
Reactivity	Human/Mouse/Rat

### PRODUCT PROPERTIES

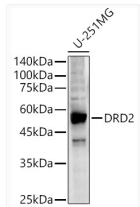
Clonality	Polyclonal
Concentration	Lot specific
Conjugation	Unconjugated
Purification	Affinity purification
Dilution Range	WB:1:100-1:500 ELISA:Recommended starting concentration is 1 µg/mL. Please optimize the concentration based on your specific assay requirements.
Formulation	PBS with 0.05% Proclin300, 50% Glycerol, pH 7.3.
Isotype	IgG
Molecular Weight	Protein Mw: 51kDa Observed Mw: 51kDa
Storage Instruction	Store at -20°C for up to 1 year from the date of receipt, and avoid repeat freeze-thaw cycles.

### TARGET INFORMATION

Gene ID	<a href="#">1813</a>
Gene Symbol	<a href="#">DRD2</a>
UniProt ID	<a href="#">DRD2_HUMAN</a>
Immunogen Region	13-443
Immunogen Sequence	MDPLNLSWYDDDLERQNWRSR PFNGSDGKADRPHYNYATL LTLIAVIVFGNVLVCMASV REKALQTTTNYLIVSLAVAD LLVATLVMPWVVYLEVVGW
Specificity	A synthetic peptide corresponding to a sequence within amino acids 1-100 of human DRD2 (NP_000786.1).

### ADDITIONAL INFORMATION

Note STRICTLY FOR FURTHER SCIENTIFIC RESEARCH USE ONLY (RUO). MUST NOT TO BE USED IN DIAGNOSTIC OR THERAPEUTIC APPLICATIONS.



Western blot analysis of U-251MG, using DRD2 antibody (STJ114796) at 1:400 dilution. Secondary antibody: HRP Goat Anti-Rabbit IgG (H+L) (STJS000856) at 1:10000 dilution. Lysates/proteins: 25 µg per lane. Blocking buffer: 3% nonfat dry milk in TBST. Detection: ECL Enhanced Kit. Exposure time: 90s.