

## Anti-DKC1 antibody (1-180) (STJ114780)

### GENERAL INFORMATION

Product Type	Primary antibodies
Applications	WB/IHC-P/IF/ICC/ELISA
Host / Source	Rabbit
Reactivity	Human/Mouse

### PRODUCT PROPERTIES

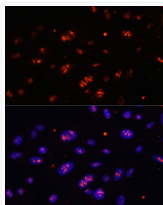
Clonality	Polyclonal
Concentration	Lot specific
Conjugation	Unconjugated
Purification	Affinity purification
Dilution Range	WB:1:500-1:2000 IHC-P:1:50-1:100 IF/CC:1:50-1:100 ELISA:Recommended starting concentration is 1 µg/mL. Please optimize the concentration based on your specific assay requirements.
Formulation	PBS with 0.01% Thimerosal, 50% Glycerol, pH 7.3.
Isotype	IgG
Molecular Weight	Protein Mw: 58kDa Observed Mw: 57kDa
Storage Instruction	Store at -20°C for up to 1 year from the date of receipt, and avoid repeat freeze-thaw cycles.

### TARGET INFORMATION

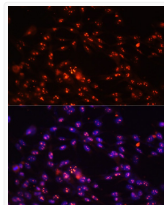
Gene ID	<a href="#">1736</a>
Gene Symbol	<a href="#">DKC1</a>
UniProt ID	<a href="#">DKC1_HUMAN</a>
Immunogen Region	1-180
Immunogen Sequence	MADAEVILPKKHKKKKERK SLPEEDVAEIQHAEFLIKP ESKVAKLDTSQWPLLLKNFD KLNVRTHYTPACGSNPLK REIGDYIRTGFINLDKPSNP SSHEVVAVIRRIILRVEKTDGH SGTLDPKVTGCLIVCIERAT RLVKSQQSAGKEYVGVIRLH NAIEGGTQLSRALETLTGAL
Specificity	Recombinant fusion protein containing a sequence corresponding to amino acids 1-180 of human DKC1 (NP_001354.1).

### ADDITIONAL INFORMATION

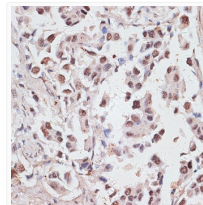
Note STRICTLY FOR FURTHER SCIENTIFIC RESEARCH USE ONLY (RUO). MUST NOT TO BE USED IN DIAGNOSTIC OR THERAPEUTIC APPLICATIONS.



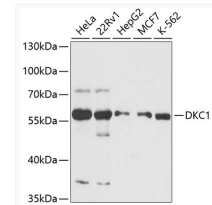
Immunofluorescence analysis of U-2 OS cells using DKC1 Rabbit polyclonal antibody (STJ114780) at dilution of 1:100. Secondary antibody: Cy3 Goat Anti-Rabbit IgG (H+L) at 1:500 dilution. Blue: DAPI for nuclear staining.



Immunofluorescence analysis of NIH-3T3 cells using DKC1 Rabbit polyclonal antibody (STJ114780) at dilution of 1:100. Secondary antibody: Cy3 Goat Anti-Rabbit IgG (H+L) at 1:500 dilution. Blue: DAPI for nuclear staining.



Immunohistochemistry analysis of DKC1 in paraffin-embedded human lung cancer using DKC1 Rabbit polyclonal antibody (STJ114780) at dilution of 1:100 (40x lens). Perform microwave antigen retrieval with 10 mM PBS buffer pH 7.2 before commencing with immunohistochemistry staining protocol.



Western blot analysis of various lysates using DKC1 Rabbit polyclonal antibody (STJ114780) at 1:3000 dilution. Secondary antibody: HRP Goat Anti-Rabbit IgG (H+L) (STJS000856) at 1:10000 dilution. Lysates/proteins: 25 µg per lane. Blocking buffer: 3% nonfat dry milk in TBST. Detection: ECL Basic Kit. Exposure time: 60s.