

Anti-CLDN4 antibody (109-209) (STJ114778)

GENERAL INFORMATION

Product Type	Primary antibodies
Applications	WB/IHC-P/ELISA
Host / Source	Rabbit
Reactivity	Human

PRODUCT PROPERTIES

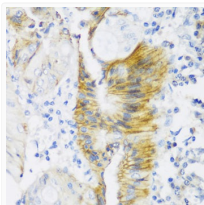
Clonality	Polyclonal
Concentration	Lot specific
Conjugation	Unconjugated
Purification	Affinity purification
Dilution Range	WB:1:2000-1:4000 IHC-P:1:50-1:100 ELISA:Recommended starting concentration is 1 Mu g/mL. Please optimize the concentration based on your specific assay requirements.
Formulation	PBS with 0.05% Proclin300, 50% Glycerol, pH 7.3.
Isotype	IgG
Molecular Weight	Protein Mw: 22kDa Observed Mw: 18kDa
Storage Instruction	Store at -20°C for up to 1 year from the date of receipt, and avoid repeat freeze-thaw cycles.

TARGET INFORMATION

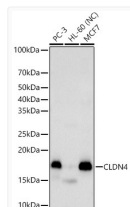
Gene ID	1364
Gene Symbol	CLDN4
UniProt ID	CLD4_HUMAN
Immunogen Region	109-209
Immunogen Sequence	EDESAKAKTMIVAGVVFLLA GLMVIVPVSHTAHNIIQDFY NPLVASGQKREMGASLYVGV AASGLLLGGLLCCNCPPTDKPYSAKYSAARSAAASNY V
Specificity	A synthetic peptide corresponding to a sequence within amino acids 109-209 of human CLDN4 (NP_001296.1).

ADDITIONAL INFORMATION

Note STRICTLY FOR FURTHER SCIENTIFIC RESEARCH USE ONLY (RUO). MUST NOT TO BE USED IN DIAGNOSTIC OR THERAPEUTIC APPLICATIONS.



Immunohistochemistry analysis of paraffin-embedded human colon carcinoma using CLDN4 antibody (STJ114778) at dilution of 1:150 (40x lens). Perform microwave antigen retrieval with 10 mM PBS buffer pH 7.2 before commencing with immunohistochemistry staining protocol.



Western blot analysis of various lysates, using CLDN4 Rabbit polyclonal antibody (STJ114778) at 1:4000 dilution. Secondary antibody: HRP Goat Anti-Rabbit IgG (H+L) (STJS000856) at 1:10000 dilution. Lysates/proteins: 25 Mu g per lane. Blocking buffer: 3% nonfat dry milk in TBST. Detection: ECL Basic Kit. Negative control (NC) : HL-60 Exposure time: 30s.