

## Anti-PLCH1 antibody (1100-1400) (STJ114769)

### GENERAL INFORMATION

Product Type	Primary antibodies
Applications	WB/ELISA
Host / Source	Rabbit
Reactivity	Rat

### PRODUCT PROPERTIES

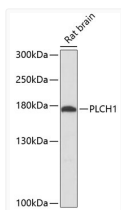
Clonality	Polyclonal
Concentration	Lot specific
Conjugation	Unconjugated
Purification	Affinity purification
Dilution Range	WB:1:1000-1:3000 ELISA:Recommended starting concentration is 1 µg/mL. Please optimize the concentration based on your specific assay requirements.
Formulation	PBS with 0.01% Thimerosal, 50% Glycerol, pH 7.3.
Isotype	IgG
Molecular Weight	Protein Mw: 189kDa Observed Mw: 175kDa
Storage Instruction	Store at -20°C for up to 1 year from the date of receipt, and avoid repeat freeze-thaw cycles.

### TARGET INFORMATION

Gene ID	<a href="#">23007</a>
Gene Symbol	<a href="#">PLCH1</a>
UniProt ID	<a href="#">PLCH1_HUMAN</a>
Immunogen Region	1100-1400
Immunogen Sequence	LEGNRGKGRAATSFSLSDVSLMCS DIPDLHSTAILQESVI SHLIDNVLTNENEPGSSIS ALIGQFDETNNQALTVVSHL HNTSVMMSGHCPLPSLGLKMP IKHGFCKGKSKSSFLCSSPE LIALSSSETTKHATNTVYET TCTPI SKTKPDDDLSSKAKT AALESNLPGSPNTRSGWLPK SPTKGEDWETLKSCSPASSP DLTEDVIADPTLCFNSGES SLVEIDGESENLSLTTCY
Specificity	Recombinant fusion protein containing a sequence corresponding to amino acids 1100-1400 of human PLCH1 (NP_055811.1).

### ADDITIONAL INFORMATION

Note **STRICTLY FOR FURTHER SCIENTIFIC RESEARCH USE ONLY (RUO). MUST NOT TO BE USED IN DIAGNOSTIC OR THERAPEUTIC APPLICATIONS.**



Western blot analysis of lysates from rat brain, using PLCH1 Rabbit polyclonal antibody (STJ114769) at 1:3000 dilution. Secondary antibody: HRP Goat Anti-Rabbit IgG (H+L) (STJS000856) at 1:10000 dilution. Lysates/proteins: 25 µg per lane. Blocking buffer: 3% nonfat dry milk in TBST. Detection: ECL Basic Kit. Exposure time: 90s.