

Anti-SCGN antibody (1-276) (STJ114763)

GENERAL INFORMATION

Product Type	Primary antibodies
Applications	WB/IHC-P/IF/ICC/ELISA
Host / Source	Rabbit
Reactivity	Human/Mouse/Rat

PRODUCT PROPERTIES

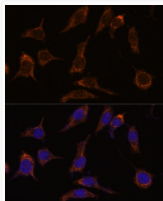
Clonality	Polyclonal
Concentration	Lot specific
Conjugation	Unconjugated
Purification	Affinity purification
Dilution Range	WB:1:500-1:2000 IHC-P:1:50-1:200 IF/ICC:1:50-1:200 ELISA:Recommended starting concentration is 1 Mu g/mL. Please optimize the concentration based on your specific assay requirements.
Formulation	PBS with 0.01% Thimerosal, 50% Glycerol, pH 7.3.
Isotype	IgG
Molecular Weight	Protein Mw: 32kDa Observed Mw: 27kDa
Storage Instruction	Store at -20°C for up to 1 year from the date of receipt, and avoid repeat freeze-thaw cycles.

TARGET INFORMATION

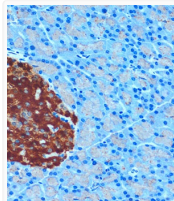
Gene ID	10590
Gene Symbol	SCGN
UniProt ID	SEGN_HUMAN
Immunogen Region	1-276
Immunogen Sequence	MDSSREPTLGRDLAAGFWQV WQRFDADEKGYIEEKELDAF FLHMLMKLGTDDTVMKANLH KVKQQFMTTQDASKDGRIRM KELAGMFLSEDENFLLFR ENPLDSSVEFMQIWRKYDAD SSGFISAAELRNFLRDLFLH HKKAISEAKLEEYTGTMMKI FDRNKDGRDLNDLARILAL QENFLLQFKMDACSTEERKR DFEKIFAYYDVSKTGALEGP EVDGDFVKDMMELVQPSISG
Specificity	Recombinant fusion protein containing a sequence corresponding to amino acids 1-276 of human Secretagogin (Secretagogin (SCGN)) (NP_008929.2).

ADDITIONAL INFORMATION

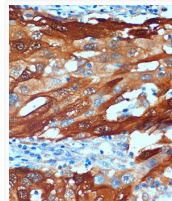
Note STRICTLY FOR FURTHER SCIENTIFIC RESEARCH USE ONLY (RUO). MUST NOT TO BE USED IN DIAGNOSTIC OR THERAPEUTIC APPLICATIONS.



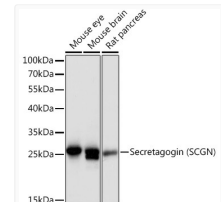
Immunofluorescence analysis of L929 cells using Secretagogin (SCGN) Rabbit polyclonal antibody (STJ114763) at dilution of 1:100. Secondary antibody: Cy3 Goat Anti-Rabbit IgG (H+L) at 1:500 dilution. Blue: DAPI for nuclear staining.



Immunohistochemistry analysis of Secretagogin (SCGN) in paraffin-embedded Rat pancreas using Secretagogin (Secretagogin (SCGN)) Rabbit polyclonal antibody (STJ114763) at dilution of 1:100 (40x lens). Perform microwave antigen retrieval with 10 mM PBS buffer pH 7. 2 before commencing with immunohistochemistry staining protocol.



Immunohistochemistry analysis of Secretagogin (SCGN) in paraffin-embedded Human breast cancer using Secretagogin (Secretagogin (SCGN)) Rabbit polyclonal antibody (STJ114763) at dilution of 1:100 (40x lens). Perform microwave antigen retrieval with 10 mM PBS buffer pH 7. 2 before commencing with immunohistochemistry staining protocol.



Western blot analysis of various lysates using Secretagogin (SCGN) Rabbit polyclonal antibody (STJ114763) at 1:3000 dilution. Secondary antibody: HRP Goat Anti-Rabbit IgG (H+L) (STJS000856) at 1:10000 dilution. Lysates/proteins: 25 Mu g per lane. Blocking buffer: 3% nonfat dry milk in TBST. Detection: ECL Basic Kit. Exposure time: 90s.