

Anti-Kdm6b antibody (90-190) (STJ114640)

GENERAL INFORMATION

Product Type	Primary antibodies
Applications	WB/ELISA
Host / Source	Rabbit
Reactivity	Human/Mouse

PRODUCT PROPERTIES

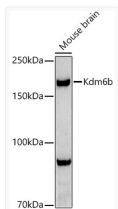
Clonality	Polyclonal
Concentration	Lot specific
Conjugation	Unconjugated
Purification	Affinity purification
Dilution Range	WB:1:100-1:500 ELISA:Recommended starting concentration is 1 µg/mL. Please optimize the concentration based on your specific assay requirements.
Formulation	PBS with 0.05% Proclin300, 50% Glycerol, pH 7.3.
Isotype	IgG
Molecular Weight	Protein Mw: 176kDa Observed Mw: 177kDa
Storage Instruction	Store at -20°C for up to 1 year from the date of receipt, and avoid repeat freeze-thaw cycles.

TARGET INFORMATION

Gene ID	216850
Gene Symbol	Kdm6b
UniProt ID	KDM6B_MOUSE
Immunogen Region	90-190
Immunogen Sequence	LESLHGCVQALLREPAQPGL WEQLGQLYESEHDSEEAVCC YHRALRYGGSF AELGPRIGR LQQAQLWNFHAGSCQHRKRV LPPLEQVWNLHLEHKRNYG A
Specificity	Recombinant fusion protein containing a sequence corresponding to amino acids 90-190 of mouse Kdm6b (NP_001017426.1).

ADDITIONAL INFORMATION

Note **STRICTLY FOR FURTHER SCIENTIFIC RESEARCH USE ONLY (RUO). MUST NOT TO BE USED IN DIAGNOSTIC OR THERAPEUTIC APPLICATIONS.**



Western blot analysis of extracts of Mouse brain, using Kdm6b Rabbit polyclonal antibody (STJ114640) at 1:500 dilution. Secondary antibody: HRP Goat Anti-Rabbit IgG (H+L) (STJS000856) at 1:10000 dilution. Lysates/proteins: 25 µg per lane. Blocking buffer: 3% nonfat dry milk in TBST. Detection: ECL Basic Kit. Exposure time: 90s.