

## Anti-NAT2 antibody (171-290) (STJ114639)

### GENERAL INFORMATION

Product Type	Primary antibodies
Applications	WB/IHC-P/ELISA
Host / Source	Rabbit
Reactivity	Human/Mouse/Rat

### PRODUCT PROPERTIES

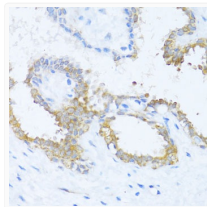
Clonality	Polyclonal
Concentration	Lot specific
Conjugation	Unconjugated
Purification	Affinity purification
Dilution Range	WB:1:500-1:2000 IHC-P:1:50-1:200 ELISA:Recommended starting concentration is 1 $\mu$ g/mL. Please optimize the concentration based on your specific assay requirements.
Formulation	PBS with 0.01% Thimerosal, 50% Glycerol, pH 7.3.
Isotype	IgG
Molecular Weight	Protein Mw: 34kDa Observed Mw: 36kDa
Storage Instruction	Store at -20°C for up to 1 year from the date of receipt, and avoid repeat freeze-thaw cycles.

### TARGET INFORMATION

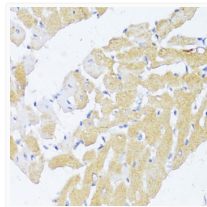
Gene ID	<a href="#">10</a>
Gene Symbol	<a href="#">NAT2</a>
UniProt ID	<a href="#">ARY2_HUMAN</a>
Immunogen Region	171-290
Immunogen Sequence	TNKEFLNSHLLPKKKHQKIY LFTLEPRTIEDFESMNTYLQ TSPTSSFITTSFCSLQTPEG VYCLVGFILTYRKFNKYDNT DLVEFKLTLEEEVEEVLRLNI FKISLGRNLVPKPGDGLTI
Specificity	Recombinant fusion protein containing a sequence corresponding to amino acids 171-290 of human NAT2 (NP_000006.2).

### ADDITIONAL INFORMATION

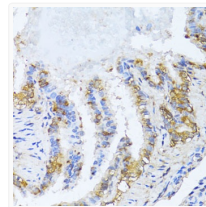
Note **STRICTLY FOR FURTHER SCIENTIFIC RESEARCH USE ONLY (RUO). MUST NOT TO BE USED IN DIAGNOSTIC OR THERAPEUTIC APPLICATIONS.**



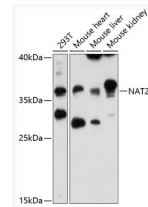
Immunohistochemistry analysis of NAT2 in paraffin-embedded human breast using NAT2 Rabbit polyclonal antibody (STJ114639) at dilution of 1:100 (40x lens). Perform microwave antigen retrieval with 10 mM PBS buffer pH 7.2 before commencing with immunohistochemistry staining protocol.



Immunohistochemistry analysis of NAT2 in paraffin-embedded rat heart using NAT2 Rabbit polyclonal antibody (STJ114639) at dilution of 1:100 (40x lens). Perform microwave antigen retrieval with 10 mM PBS buffer pH 7.2 before commencing with immunohistochemistry staining protocol.



Immunohistochemistry analysis of NAT2 in paraffin-embedded rat lung using NAT2 Rabbit polyclonal antibody (STJ114639) at dilution of 1:100 (40x lens). Perform microwave antigen retrieval with 10 mM PBS buffer pH 7.2 before commencing with immunohistochemistry staining protocol.



Western blot analysis of various lysates using NAT2 Rabbit polyclonal antibody (STJ114639) at 1:3000 dilution. Secondary antibody: HRP Goat Anti-Rabbit IgG (H+L) (STJS000856) at 1:10000 dilution. Lysates/proteins: 25  $\mu$ g per lane. Blocking buffer: 3% nonfat dry milk in TBST. Detection: ECL Enhanced Kit. Exposure time: 30s.