

## Anti-Kdm6b antibody (90-1641) (STJ114636)

### GENERAL INFORMATION

Product Type	Primary antibodies
Applications	WB/IF/ICC/ELISA
Host / Source	Rabbit
Reactivity	Human/Mouse

### PRODUCT PROPERTIES

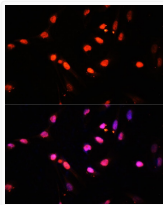
Clonality	Polyclonal
Concentration	Lot specific
Conjugation	Unconjugated
Purification	Affinity purification
Dilution Range	WB:1:500-1:2000 IF/CC:1:50-1:200 ELISA:Recommended starting concentration is 1 Mu g/mL. Please optimize the concentration based on your specific assay requirements.
Formulation	PBS with 0.05% Proclin300, 50% Glycerol, pH 7.3.
Isotype	IgG
Molecular Weight	Protein Mw: 176kDa Observed Mw: 170kDa
Storage Instruction	Store at -20°C for up to 1 year from the date of receipt, and avoid repeat freeze-thaw cycles.

### TARGET INFORMATION

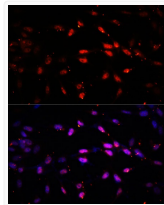
Gene ID	<a href="#">216850</a>
Gene Symbol	<a href="#">Kdm6b</a>
UniProt ID	<a href="#">KDM6B_MOUSE</a>
Immunogen Region	90-1641
Immunogen Sequence	LESLHGCVQALLREPAQPGL WEQLGQLYESEHDSEEAVCC YHRALRYGGSFAELGPRIGR LQQAQLWNFHAGSCQHRAKV LPPLEQVWVWLLHLEHKRNYG A
Specificity	Recombinant fusion protein containing a sequence corresponding to amino acids 90-190 of mouse Kdm6b (NP_001017426.1).

### ADDITIONAL INFORMATION

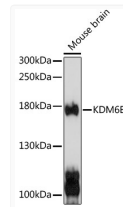
Note STRICTLY FOR FURTHER SCIENTIFIC RESEARCH USE ONLY (RUO). MUST NOT TO BE USED IN DIAGNOSTIC OR THERAPEUTIC APPLICATIONS.



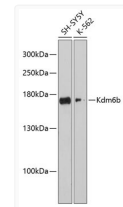
Immunofluorescence analysis of U2OS cells using KDM6B antibody (STJ114636) at dilution of 1:100. Blue: DAPI for nuclear staining.



Immunofluorescence analysis of NIH/3T3 cells using KDM6B antibody (STJ114636) at dilution of 1:100. Blue: DAPI for nuclear staining.



Western blot analysis of extracts of mouse brain, using KDM6B antibody (STJ114636) at 1:1000 dilution. Secondary antibody: HRP Goat Anti-Rabbit IgG (H+L) (STJS000856) at 1:10000 dilution. Lysates/proteins: 25 Mu g per lane. Blocking buffer: 3% nonfat dry milk in TBST. Detection: ECL Basic Kit. Exposure time: 10s.



Western blot analysis of extracts of various cell lines, using Kdm6b antibody (STJ114636) at 1:3000 dilution. Secondary antibody: HRP Goat Anti-Rabbit IgG (H+L) (STJS000856) at 1:10000 dilution. Lysates/proteins: 25 Mu g per lane. Blocking buffer: 3% nonfat dry milk in TBST. Detection: ECL Enhanced Kit. Exposure time: 90s.