

Anti-WNT5A antibody (202-215) (STJ114617)

GENERAL INFORMATION

Product Type	Primary antibodies
Applications	WB/IHC-P/IF/ICC/ELISA
Host / Source	Rabbit
Reactivity	Human/Mouse/Rat

PRODUCT PROPERTIES

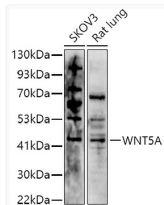
Clonality	Polyclonal
Concentration	Lot specific
Conjugation	Unconjugated
Purification	Affinity purification
Dilution Range	WB:1:500-1:1000 IHC-P:1:100-1:500 IF/ICC:1:50-1:200 ELISA:Recommended starting concentration is 1 Mu g/mL. Please optimize the concentration based on your specific assay requirements.
Formulation	PBS with 0.05% Proclin300, 50% Glycerol, pH7.3.
Isotype	IgG
Molecular Weight	Protein Mw: 42kDa Observed Mw: 45kDa
Storage Instruction	Store at -20°C for up to 1 year from the date of receipt, and avoid repeat freeze-thaw cycles.

TARGET INFORMATION

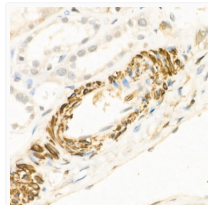
Gene ID	7474
Gene Symbol	WNT5A
UniProt ID	WNT5A_HUMAN
Immunogen Region	202-215
Immunogen Sequence	STVDNTSVFGRVMQIGSRET AFTYAVSAAGVVNAMSRAQR EGEIETGCGCSRAARPKDLPR DWLWGGCGDNIDYGYRFAKE FVDARERERIHAKGSYESAR ILMNLHNNEAGRRTVYNLAD VACKCHGVSGSCSLKTCWLG LADFRKVGDALKEKYDSAAA MRLNSRQKLVQVNSRFNSPT TQDLVYIDPSPDYCVRNESG TGLGTQGRLCNKTSK
Specificity	A synthetic peptide corresponding to a sequence within amino acids 116-215 of human WNT5A (NP_003383.4).

ADDITIONAL INFORMATION

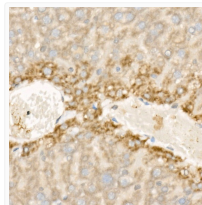
Note STRICTLY FOR FURTHER SCIENTIFIC RESEARCH USE ONLY (RUO). MUST NOT TO BE USED IN DIAGNOSTIC OR THERAPEUTIC APPLICATIONS.



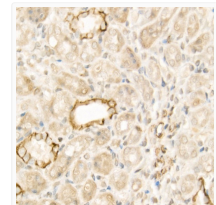
Western blot analysis of extracts of various cell lines, using (STJ114617) at 1:1000 dilution. Secondary antibody: HRP Goat Anti-rabbit IgG (H+L) (STJS000856) at 1:10000 dilution. Lysates/proteins: 25 Mu g per lane. Blocking buffer: 3% non-fat dry milk in TBST. Detection: ECL Basic Kit. Exposure time: 180s.



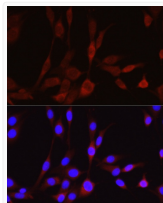
Immunohistochemistry analysis of paraffin-embedded human kidney using WNT5A rabbit polyclonal antibody (STJ114617) at dilution of 1:100 (40x lens). Perform high pressure antigen retrieval with 10 mM citrate buffer pH 6.0 before commencing with immunohistochemistry staining protocol.



Immunohistochemistry analysis of paraffin-embedded mouse liver using WNT5A rabbit polyclonal antibody (STJ114617) at dilution of 1:100 (40x lens). Perform high pressure antigen retrieval with 10 mM citrate buffer pH 6.0 before commencing with immunohistochemistry staining protocol.



Immunohistochemistry analysis of paraffin-embedded rat kidney using WNT5A rabbit polyclonal antibody (STJ114617) at dilution of 1:100 (40x lens). Perform high pressure antigen retrieval with 10 mM citrate buffer pH 6.0 before commencing with immunohistochemistry staining protocol.



Immunofluorescence analysis of PC-12 cells using WNT5A rabbit polyclonal antibody (STJ114617) at dilution of 1:50 (40x lens). Blue: DAPI for nuclear staining.