

Anti-ACE2 antibody (18-740) (STJ114610)

GENERAL INFORMATION

Product Type	Primary antibodies
Applications	WB/IHC-P/IF/ICC/ELISA
Host / Source	Rabbit
Reactivity	Human/Mouse/Rat

PRODUCT PROPERTIES

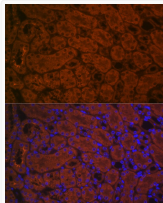
Clonality	Polyclonal
Concentration	Lot specific
Conjugation	Unconjugated
Purification	Affinity purification
Dilution Range	WB:1:500-1:1000 IHC-P:1:50-1:200 IF/ICC:1:50-1:200 ELISA:Recommended starting concentration is 1 Mu g/mL. Please optimize the concentration based on your specific assay requirements.
Formulation	PBS with 0.09% Sodium Azide, 50% Glycerol, pH7.3.
Isotype	IgG
Molecular Weight	Protein Mw: 92kDa Observed Mw: 100kDa
Storage Instruction	Store at -20°C for up to 1 year from the date of receipt, and avoid repeat freeze-thaw cycles.

TARGET INFORMATION

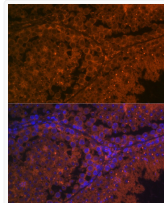
Gene ID	59272
Gene Symbol	ACE2
UniProt ID	ACE2_HUMAN
Immunogen Region	18-740
Immunogen Sequence	QSTIEEQAKTFLDKFNHEAE DLFYQSSLASWNYNTNITEE NVQNMNAGDKWSAFLKEQS TLAQMYPLQEIQLNLTVKLQL QALQQNGSSVLSSEDKSKRLN TILNTMSTIYSTGKVCNPDN PQECLLLEPGLNEIMANSLD YNERLWAWESWRSEVGGKQLR PLYEEYVVLKNEMARANHYE DYGDYWRGDYEVNGVDGYDY SRGQLIEDVEHTFEEIKPLY EHLHAYVRAKLMNAYPSYI
Specificity	A synthetic peptide corresponding to a sequence within amino acids 18-740 of human ACE2 (NP_068576.1).

ADDITIONAL INFORMATION

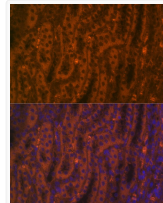
Note **STRICTLY FOR FURTHER SCIENTIFIC RESEARCH USE ONLY (RUO). MUST NOT TO BE USED IN DIAGNOSTIC OR THERAPEUTIC APPLICATIONS.**



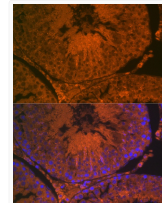
Immunofluorescence analysis of paraffin-embedded mouse kidney using ACE2 Rabbit polyclonal antibody (STJ114610) at dilution of 1:100 (40x lens). Secondary antibody: Cy3 Goat Anti-Rabbit IgG (H+L) at 1:500 dilution. Blue: DAPI for nuclear staining.



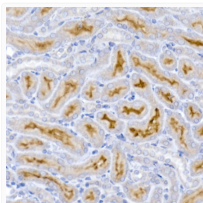
Immunofluorescence analysis of paraffin-embedded mouse testis using ACE2 Rabbit polyclonal antibody (STJ114610) at dilution of 1:100 (40x lens). Secondary antibody: Cy3 Goat Anti-Rabbit IgG (H+L) at 1:500 dilution. Blue: DAPI for nuclear staining.



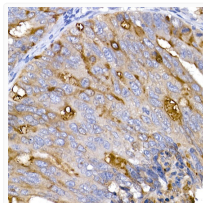
Immunofluorescence analysis of paraffin-embedded rat kidney using ACE2 Rabbit polyclonal antibody (STJ114610) at dilution of 1:100 (40x lens). Secondary antibody: Cy3 Goat Anti-Rabbit IgG (H+L) at 1:500 dilution. Blue: DAPI for nuclear staining.



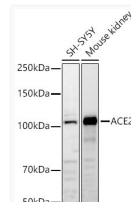
Immunofluorescence analysis of paraffin-embedded rat testis using ACE2 Rabbit polyclonal antibody (STJ114610) at dilution of 1:100 (40x lens). Secondary antibody: Cy3 Goat Anti-Rabbit IgG (H+L) at 1:500 dilution. Blue: DAPI for nuclear staining.



Immunohistochemistry analysis of ACE2 in paraffin-embedded mouse kidney using ACE2 Rabbit polyclonal antibody (STJ114610) at dilution of 1:50 (40x lens). Perform high pressure antigen retrieval with 10 mM citrate buffer pH 6.0 before commencing with immunohistochemistry staining protocol.



Immunohistochemistry analysis of ACE2 in paraffin-embedded human colon carcinoma using ACE2 Rabbit polyclonal antibody (STJ114610) at dilution of 1:50 (40x lens). Perform high pressure antigen retrieval with 10 mM citrate buffer pH 6.0 before commencing with immunohistochemistry staining protocol.



Western blot analysis of various lysates using ACE2 Rabbit polyclonal antibody (STJ114610) at 1:1000 dilution. Secondary antibody:HRP Goat Anti-Rabbit IgG (H+L) (STJS000856) at 1:10000 dilution. Lysates/ proteins: 25 Mu g per lane. Blocking buffer: 3 % nonfat dry milk in TBST. Detection:ECL Basic Kit. Exposure time: 30s.