

Anti-CD248 antibody (18-150) (STJ114579)

GENERAL INFORMATION

Product Type	Primary antibodies
Applications	WB/ELISA
Host / Source	Rabbit
Reactivity	Human

PRODUCT PROPERTIES

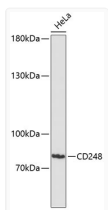
Clonality	Polyclonal
Concentration	Lot specific
Conjugation	Unconjugated
Purification	Affinity purification
Dilution Range	WB:1:1000-1:5000 ELISA:Recommended starting concentration is 1 µg/mL. Please optimize the concentration based on your specific assay requirements.
Formulation	PBS with 0.05% Proclin300, 50% Glycerol, pH 7.3.
Isotype	IgG
Molecular Weight	Protein Mw: 81kDa Observed Mw: 81kDa
Storage Instruction	Store at -20°C for up to 1 year from the date of receipt, and avoid repeat freeze-thaw cycles.

TARGET INFORMATION

Gene ID	57124
Gene Symbol	CD248
UniProt ID	CD248_HUMAN
Immunogen Region	18-150
Immunogen Sequence	QDPWAAEPRAACGPSSCYAL FPRRRTFLEAWRACRELGGD LATPRTPEEAQRVDSL VGAG PASRLWIGLQRQARQCQLQ RPLRGFTWTTGDQDTAFTNW AQPASGGPCPAQRVLEAS GEHRWLEGSC TLA
Specificity	Recombinant fusion protein containing a sequence corresponding to amino acids 18-150 of human CD248 (NP_065137.1).

ADDITIONAL INFORMATION

Note STRICTLY FOR FURTHER SCIENTIFIC RESEARCH USE ONLY (RUO). MUST NOT TO BE USED IN DIAGNOSTIC OR THERAPEUTIC APPLICATIONS.



Western blot analysis of lysates from HeLa cells, using CD248 Rabbit polyclonal antibody (STJ114579) at 1:3000 dilution. Secondary antibody: HRP Goat Anti-Rabbit IgG (H+L) (STJS000856) at 1:10000 dilution. Lysates/proteins: 25 µg per lane. Blocking buffer: 3% nonfat dry milk in TBST. Detection: ECL Enhanced Kit. Exposure time: 90s.