

Anti-NLRP3 antibody (1-220) (STJ114567)

GENERAL INFORMATION

| | |
|---------------|--------------------|
| Product Type | Primary antibodies |
| Applications | WB/IF/ICC/ELISA |
| Host / Source | Rabbit |
| Reactivity | Human/Mouse/Rat |

PRODUCT PROPERTIES

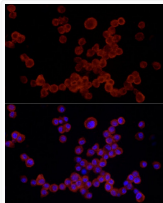
| | |
|---------------------|--|
| Clonality | Polyclonal |
| Concentration | Lot specific |
| Conjugation | Unconjugated |
| Purification | Affinity purification |
| Dilution Range | WB:1:500-1:2000 IF/CC:1:50-1:200 ELISA:Recommended starting concentration is 1 Mu g/mL. Please optimize the concentration based on your specific assay requirements. |
| Formulation | PBS with 0.05% Proclin300, 50% Glycerol, pH7.3. |
| Isotype | IgG |
| Molecular Weight | Protein Mw: 118kDa Observed Mw: Refer to figures |
| Storage Instruction | Store at -20°C for up to 1 year from the date of receipt, and avoid repeat freeze-thaw cycles. |

TARGET INFORMATION

| | |
|--------------------|---|
| Gene ID | 114548 |
| Gene Symbol | NLRP3 |
| UniProt ID | NLRP3_HUMAN |
| Immunogen Region | 1-220 |
| Immunogen Sequence | MKMASTRCKLARYLEDLV DLKKFKMHLEDYPPQKGCIP LPRGQTEKADHVDLATLMID FNGEEKAWAMAVWIFAAINR RDLYEKAKRDEPKWGSNDAR VSNPTVICQEDSIEEEWMGL LEYLSRISICKMKKDYRKKY RKYVRSRFQCIEDRNARLGE SVSLNKRYTRLRLIKEHRSQ QEREQELLAIGKTKCESPV SPIKMELLFDPDEHSEPVH |
| Specificity | A synthetic peptide corresponding to a sequence within amino acids 1-220 of human NLRP3 (NP_001120934.1). |

ADDITIONAL INFORMATION

| | |
|------|---|
| Note | STRICTLY FOR FURTHER SCIENTIFIC RESEARCH USE ONLY (RUO). MUST NOT TO BE USED IN DIAGNOSTIC OR THERAPEUTIC APPLICATIONS. |
|------|---|



Immunofluorescence analysis of RAW264.7 cells using NLRP3 Rabbit polyclonal antibody (STJ114567) at dilution of 1:200 (40x lens). Secondary antibody: Cy3 Goat Anti-Rabbit IgG (H+L) at 1:500 dilution. Blue: DAPI for nuclear staining.