

Anti-CYP19A1 antibody (1-180) (STJ114557)

GENERAL INFORMATION

| | |
|---------------|-----------------------|
| Product Type | Primary antibodies |
| Applications | WB/IHC-P/IF/ICC/ELISA |
| Host / Source | Rabbit |
| Reactivity | Human/Rat |

PRODUCT PROPERTIES

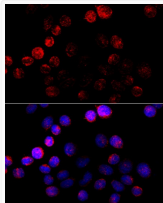
| | |
|---------------------|---|
| Clonality | Polyclonal |
| Concentration | Lot specific |
| Conjugation | Unconjugated |
| Purification | Affinity purification |
| Dilution Range | WB:1:1000-1:2000 IHC-P:1:50-1:200 IF/CC:1:50-1:200 ELISA:Recommended starting concentration is 1 Mu g/mL. Please optimize the concentration based on your specific assay requirements. |
| Formulation | PBS with 0.09% Sodium Azide, 50% Glycerol, pH7.3. |
| Isotype | IgG |
| Molecular Weight | Protein Mw: 58kDa Observed Mw: 48kDa |
| Storage Instruction | Store at -20°C for up to 1 year from the date of receipt, and avoid repeat freeze-thaw cycles. |

TARGET INFORMATION

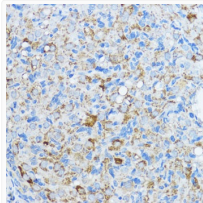
| | |
|--------------------|---|
| Gene ID | 1588 |
| Gene Symbol | CYP19A1 |
| UniProt ID | CP19A_HUMAN |
| Immunogen Region | 1-180 |
| Immunogen Sequence | MVLEMLNPIHYNITSIVPEA MPAATMPVLLLTGLFLLWVN YEGTSSIPGPGYCMGIGPLI SHGRFLWMGIGSACNYNRYV YGEFMRVWISGEETLIISKSSSMFHIMKHNHYSSRFGSKL GLQCIGMHEKGIIFFNNPEL WKTTRPFFMKALSGPGLVRM VTVCAESLKTHLDRLEEVTN |
| Specificity | Recombinant fusion protein containing a sequence corresponding to amino acids 1-180 of human Aromatase (CYP19A1) (NP_000094.2). |

ADDITIONAL INFORMATION

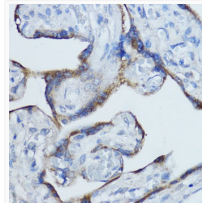
Note **STRICTLY FOR FURTHER SCIENTIFIC RESEARCH USE ONLY (RUO). MUST NOT TO BE USED IN DIAGNOSTIC OR THERAPEUTIC APPLICATIONS.**



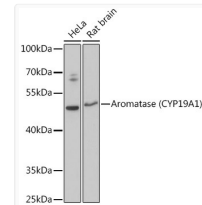
Immunofluorescence analysis of HeLa cells using Aromatase (CYP19A1) antibody (STJ114557) at dilution of 1:100 (40x lens). Blue: DAPI for nuclear staining.



Immunohistochemistry analysis of paraffin-embedded rat ovary using Aromatase (CYP19A1) antibody (STJ114557) at dilution of 1:100 (40x lens). Perform microwave antigen retrieval with 10 mM PBS buffer pH 7. 2 before commencing with immunohistochemistry staining protocol.



Immunohistochemistry analysis of paraffin-embedded human placenta using Aromatase (CYP19A1) antibody (STJ114557) at dilution of 1:100 (40x lens). Perform microwave antigen retrieval with 10 mM PBS buffer pH 7. 2 before commencing with immunohistochemistry staining protocol.



Western blot analysis of extracts of various cell lines, using Aromatase (CYP19A1) antibody (STJ114557) at 1:3000 dilution. Secondary antibody: HRP Goat Anti-Rabbit IgG (H+L) (STJS000856) at 1:10000 dilution. Lysates/proteins: 25 Mu g per lane. Blocking buffer: 3% nonfat dry milk in TBST. Detection: ECL Basic Kit. Exposure time: 20s.