

Anti-PEG3 antibody (195-400) (STJ114545)

GENERAL INFORMATION

Product Type	Primary antibodies
Applications	WB/IHC-P/ELISA
Host / Source	Rabbit
Reactivity	Human/Mouse/Rat

PRODUCT PROPERTIES

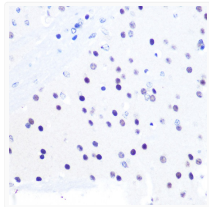
Clonality	Polyclonal
Concentration	Lot specific
Conjugation	Unconjugated
Purification	Affinity purification
Dilution Range	WB:1:500-1:1000 IHC-P:1:50-1:200 ELISA:Recommended starting concentration is 1 Mu g/mL. Please optimize the concentration based on your specific assay requirements.
Formulation	PBS with 0.01% Thimerosal, 50% Glycerol, pH 7.3.
Isotype	IgG
Molecular Weight	Protein Mw: 181kDa Observed Mw: 181kDa
Storage Instruction	Store at -20°C for up to 1 year from the date of receipt, and avoid repeat freeze-thaw cycles.

TARGET INFORMATION

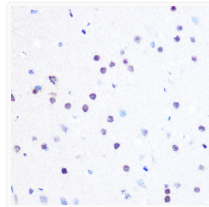
Gene ID	5178
Gene Symbol	PEG3
UniProt ID	PEG3_HUMAN
Immunogen Region	195-400
Immunogen Sequence	LSLPVVAKTSFEMDREDDRD SRAYESRSQDAESYQNVVDL AEDRKPHTIQDNMENYRKL LSLVQLAEDDGHSHMTQGHHS SRSKRSAYPSTSRGLKTMPE AKKSTHRRGICEDESSHGVI MEKFIKDVSRSSKSGRARES SDRSQRFPRMSDDNWKDISL NKRESVIQQRVYEGNAFRGG FRFNSTLVSRRKRVLERKRRY HFDTDG
Specificity	Recombinant fusion protein containing a sequence corresponding to amino acids 195-400 of human PEG3 (NP_006201.1).

ADDITIONAL INFORMATION

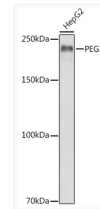
Note **STRICTLY FOR FURTHER SCIENTIFIC RESEARCH USE ONLY (RUO). MUST NOT TO BE USED IN DIAGNOSTIC OR THERAPEUTIC APPLICATIONS.**



Immunohistochemistry analysis of PEG3 in paraffin-embedded mouse brain using PEG3 Rabbit polyclonal antibody (STJ114545) at dilution of 1:100 (40x lens). Perform microwave antigen retrieval with 10 mM PBS buffer pH 7.2 before commencing with immunohistochemistry staining protocol.



Immunohistochemistry analysis of PEG3 in paraffin-embedded rat brain using PEG3 Rabbit polyclonal antibody (STJ114545) at dilution of 1:100 (40x lens). Perform microwave antigen retrieval with 10 mM PBS buffer pH 7.2 before commencing with immunohistochemistry staining protocol.



Western blot analysis of lysates from HepG2 cells, using PEG3 Rabbit polyclonal antibody (STJ114545) at 1:1000 dilution. Secondary antibody: HRP Goat Anti-Rabbit IgG (H+L) (STJS000856) at 1:10000 dilution. Lysates/proteins: 25 Mu g per lane. Blocking buffer: 3% nonfat dry milk in TBST. Detection: ECL Basic Kit. Exposure time: 1s.