

## Anti-HELQ antibody (1-270) (STJ114535)

### GENERAL INFORMATION

|               |                    |
|---------------|--------------------|
| Product Type  | Primary antibodies |
| Applications  | WB/ELISA           |
| Host / Source | Rabbit             |
| Reactivity    | Human/Mouse/Rat    |

### PRODUCT PROPERTIES

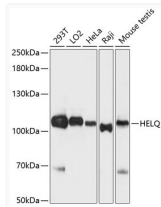
|                     |   |
|---------------------|---|
| Clonality           | Polyclonal  |
| Concentration       | Lot specific  |
| Conjugation         | Unconjugated  |
| Purification        | Affinity purification   |
| Dilution Range      | WB:1:1000-1:3000<br>ELISA:Recommended starting concentration is 1 Mu g/mL. Please optimize the concentration based on your specific assay requirements. |
| Formulation         | PBS with 0.01% Thimerosal, 50% Glycerol, pH 7.3.  |
| Isotype             | IgG   |
| Molecular Weight    | Protein Mw: 124kDa<br>Observed Mw: 124kDa   |
| Storage Instruction | Store at -20°C for up to 1 year from the date of receipt, and avoid repeat freeze-thaw cycles.  |

### TARGET INFORMATION

|                    |   |
|--------------------|---|
| Gene ID            | <a href="#">113510</a>  |
| Gene Symbol        | <a href="#">HELQ</a>  |
| UniProt ID         | <a href="#">HELQ_HUMAN</a>  |
| Immunogen Region   | 1-270   |
| Immunogen Sequence | MDECGSRIRRRVSLPKRNRP SLGCIFGAPTAELVPGDEG KEEEMVAENRRRKTAGVLP<br>VEVQPLLLSDSPECLVGGG DTNPDLLRHMPDRGVGDQP NDSEVDMFGDYDSFTENFI<br>AQVDDLEQKYMQLPEHKKHA TDFATENLCSSESKNLSIT TIGNLTELQTDKHTENQSGY<br>EGVTIEPGADLLYDVPSSQA IYFENLQNSSNDLGDHSMKE RDWKSSSHNTVNEELPHNC |
| Specificity        | Recombinant fusion protein containing a sequence corresponding to amino acids 1-270 of human HEL308 (NP_598375.3).  |

### ADDITIONAL INFORMATION

Note **STRICTLY FOR FURTHER SCIENTIFIC RESEARCH USE ONLY (RUO). MUST NOT TO BE USED IN DIAGNOSTIC OR THERAPEUTIC APPLICATIONS.**



Western blot analysis of various lysates using HEL308 Rabbit polyclonal antibody (STJ114535) at 1:3000 dilution. Secondary antibody: HRP Goat Anti-Rabbit IgG (H+L) (STJS000856) at 1:10000 dilution. Lysates/proteins: 25 Mu g per lane. Blocking buffer: 3% nonfat dry milk in TBST. Detection: ECL Basic Kit. Exposure time: 90s.