

Anti-LGR4 antibody (320-540) (STJ114531)

GENERAL INFORMATION

Product Type	Primary antibodies
Applications	WB/IF/ICC/ELISA
Host / Source	Rabbit
Reactivity	Human/Mouse/Rat

PRODUCT PROPERTIES

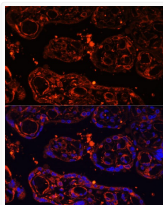
Clonality	Polyclonal
Concentration	Lot specific
Conjugation	Unconjugated
Purification	Affinity purification
Dilution Range	WB:1:1000-1:5000 IF/CC:1:50-1:200 ELISA:Recommended starting concentration is 1 μ g/mL. Please optimize the concentration based on your specific assay requirements.
Formulation	PBS with 0.05% Proclin300, 50% Glycerol, pH 7.3.
Isotype	IgG
Molecular Weight	Protein Mw: 104kDa Observed Mw: 104kDa
Storage Instruction	Store at -20°C for up to 1 year from the date of receipt, and avoid repeat freeze-thaw cycles.

TARGET INFORMATION

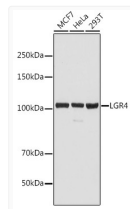
Gene ID	55366
Gene Symbol	LGR4
UniProt ID	LGR4_HUMAN
Immunogen Region	320-540
Immunogen Sequence	HLES ^L TLTGTKISSIPNNLC QEQKMLRTL ^L DL ^S YNNIRDLP SFNGCHALEEISLQRN ^Q IYQ IKEGTFQGLISLRILD ^L SRN LIHEIHSRAFATLGPITNLD VSFNELTSFPT ^E GLNGLNQL KLVGNFKLKEALAAKDFVNL RSLV ^P YAYQCCAFWGCDSY ANLNTE ^D NSLQDHSVAQEKG TADAANVTSTLENEEHSQII IHCTPSTGAFKPC ^E YLLGSW M
Specificity	Recombinant fusion protein containing a sequence corresponding to amino acids 320-540 of human LGR4 (NP_060960.2).

ADDITIONAL INFORMATION

Note **STRICTLY FOR FURTHER SCIENTIFIC RESEARCH USE ONLY (RUO). MUST NOT TO BE USED IN DIAGNOSTIC OR THERAPEUTIC APPLICATIONS.**



Immunofluorescence analysis of paraffin-embedded human placenta using LGR4 Rabbit polyclonal antibody (STJ114531) at dilution of 1:100 (40x lens). Secondary antibody: Cy3 Goat Anti-Rabbit IgG (H+L) at 1:500 dilution. Blue: DAPI for nuclear staining.



Western blot analysis of various lysates using LGR4 Rabbit polyclonal antibody (STJ114531) at 1:2000 dilution. Secondary antibody: HRP Goat Anti-Rabbit IgG (H+L) (STJS000856) at 1:10000 dilution. Lysates/proteins: 25 μ g per lane. Blocking buffer: 3% nonfat dry milk in TBST. Detection: ECL Basic Kit. Exposure time: 1s.