

Anti-CHRFAM7A antibody (1-150) (STJ114477)

GENERAL INFORMATION

Product Type	Primary antibodies
Applications	WB/ELISA
Host / Source	Rabbit
Reactivity	Human/Mouse/Rat

PRODUCT PROPERTIES

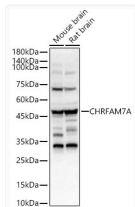
Clonality	Polyclonal
Concentration	Lot specific
Conjugation	Unconjugated
Purification	Affinity purification
Dilution Range	WB:1:500-1:2000 ELISA:Recommended starting concentration is 1 µg/mL. Please optimize the concentration based on your specific assay requirements.
Formulation	PBS with 0.02% Sodium Azide, 50% Glycerol, pH 7.3.
Isotype	IgG
Molecular Weight	Protein Mw: 46kDa Observed Mw: 46kDa
Storage Instruction	Store at -20°C for up to 1 year from the date of receipt, and avoid repeat freeze-thaw cycles.

TARGET INFORMATION

Gene ID	89832
Gene Symbol	CHRFAM7A
UniProt ID	CRFM7_HUMAN
Immunogen Region	1-150
Immunogen Sequence	MQKYCIYQHFQFQLLIQHLW IAANCDIADERFDATFHTNV LVNSSGHCCQYLPPGIFKSSC YIDVRWFPPFDVQHCCLKFSG WSYGGWSLDLQMQEADISGY IPNGEWDLVGIPGKRSEFY ECCKEYPYDVTFTVTMRRT LYGLNLLIP
Specificity	Recombinant fusion protein containing a sequence corresponding to amino acids 1-150 of human CHRFAM7A (NP_647536.1).

ADDITIONAL INFORMATION

Note STRICTLY FOR FURTHER SCIENTIFIC RESEARCH USE ONLY (RUO). MUST NOT TO BE USED IN DIAGNOSTIC OR THERAPEUTIC APPLICATIONS.



Western blot analysis of various lysates using CHRFAM7A Rabbit polyclonal antibody (STJ114477) at 1:400 dilution. Secondary antibody:HRP Goat Anti-Rabbit IgG (H+L) (STJS000856) at 1:10000 dilution. Lysates/ proteins: 25 µg per lane. Blocking buffer: 3 % nonfat dry milk in TBST. Detection:ECL Basic Kit. Exposure time: 30s.