

## Anti-MAD2L2 antibody (1-211) (STJ114433)

### GENERAL INFORMATION

Product Type	Primary antibodies
Applications	WB/IF/ICC/ELISA
Host / Source	Rabbit
Reactivity	Human/Mouse/Rat

### PRODUCT PROPERTIES

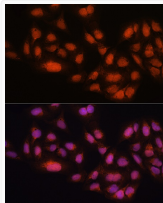
Clonality	Polyclonal
Concentration	Lot specific
Conjugation	Unconjugated
Purification	Affinity purification
Dilution Range	WB:1:500-1:2000 IF/CC:1:50-1:200 ELISA:Recommended starting concentration is 1 Mu g/mL. Please optimize the concentration based on your specific assay requirements.
Formulation	PBS with 0.02% Sodium Azide, 50% Glycerol, pH 7.3.
Isotype	IgG
Molecular Weight	Protein Mw: 24kDa Observed Mw: 24kDa
Storage Instruction	Store at -20°C for up to 1 year from the date of receipt, and avoid repeat freeze-thaw cycles.

### TARGET INFORMATION

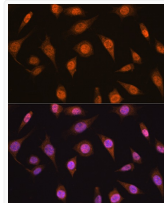
Gene ID	<a href="#">10459</a>
Gene Symbol	<a href="#">MAD2L2</a>
UniProt ID	<a href="#">MD2L2_HUMAN</a>
Immunogen Region	1-211
Immunogen Sequence	MTTLTRQDLNFGQVVADVLC EFLEVAVHLILYVREVYPVG IFQKRKKYNVPVQMSCHPEL NQYIQDTLHCVKPLLEKNDV EKVVVVILDKEHRPVEKVFV EITQPPLLSSSDSLLSHVE QLLRAFILKISVCDAVLDHN PPGCTFTVLVHTREAAATRNM EKIQVIKDFPWILADEQDVH MHDPRLIPLKTMSTSDILKMQ LYVEERAHKGS
Specificity	Recombinant fusion protein containing a sequence corresponding to amino acids 1-211 of human MAD2B/MAD2B/MAD2L2 (NP_006332.3).

### ADDITIONAL INFORMATION

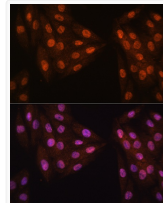
Note STRICTLY FOR FURTHER SCIENTIFIC RESEARCH USE ONLY (RUO). MUST NOT TO BE USED IN DIAGNOSTIC OR THERAPEUTIC APPLICATIONS.



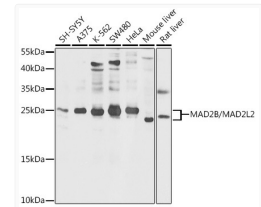
Immunofluorescence analysis of U2OS cells using MAD2B/MAD2B/MAD2L2 antibody (STJ114433) at dilution of 1:100. Blue: DAPI for nuclear staining.



Immunofluorescence analysis of L929 cells using MAD2B/MAD2B/MAD2L2 antibody (STJ114433) at dilution of 1:100. Blue: DAPI for nuclear staining.



Immunofluorescence analysis of H9C2 cells using MAD2B/MAD2B/MAD2L2 antibody (STJ114433) at dilution of 1:100. Blue: DAPI for nuclear staining.



Western blot analysis of extracts of various cell lines, using MAD2B/MAD2B/MAD2L2 antibody (STJ114433) at 1:1000 dilution. Secondary antibody: HRP Goat Anti-Rabbit IgG (H+L) (STJS000856) at 1:10000 dilution. Lysates/proteins: 25 Mu g per lane. Blocking buffer: 3% nonfat dry milk in TBST. Detection: ECL Basic Kit. Exposure time: 5s.