

Anti-SAFB2 antibody (1-255) (STJ114424)

GENERAL INFORMATION

Product Type	Primary antibodies
Applications	WB/IHC-P/ELISA
Host / Source	Rabbit
Reactivity	Human/Mouse/Rat

PRODUCT PROPERTIES

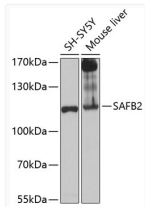
Clonality	Polyclonal
Concentration	Lot specific
Conjugation	Unconjugated
Purification	Affinity purification
Dilution Range	WB:1:500-1:2000 IHC-P:1:50-1:200 ELISA:Recommended starting concentration is 1 μ g/mL. Please optimize the concentration based on your specific assay requirements.
Formulation	PBS with 0.02% Sodium Azide, 50% Glycerol, pH 7.3.
Isotype	IgG
Molecular Weight	Protein Mw: 107kDa Observed Mw: 107kDa
Storage Instruction	Store at -20°C for up to 1 year from the date of receipt, and avoid repeat freeze-thaw cycles.

TARGET INFORMATION

Gene ID	9667
Gene Symbol	SAFB2
UniProt ID	SAFB2_HUMAN
Immunogen Region	1-255
Immunogen Sequence	MAETLPGSGDSSGPGTASLGP GVAETGTRRLSELRVIDLRA ELKKNRLDTGGNKSVLMERL KKAVKEEGQDPDEIGIELEA TSKKSAKRCVKGLKMEEEGT EDNGLEDDSRDGOEDMEASL ENLQNMGMMDMSVLDETEVA NSSAPDFGEDGTDGLLDSFC DSKEYVAAQLRQLPAQPPEH AVDGEGFKNTLETSSLNFKV TPDIEESLLEPENEKILDIL GETCKSEPVKEESSELEQP
Specificity	Recombinant fusion protein containing a sequence corresponding to amino acids 1-255 of human SAFB2 (NP_055464.1).

ADDITIONAL INFORMATION

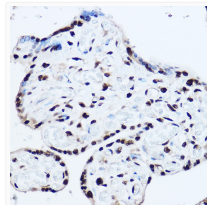
Note STRICTLY FOR FURTHER SCIENTIFIC RESEARCH USE ONLY (RUO). MUST NOT TO BE USED IN DIAGNOSTIC OR THERAPEUTIC APPLICATIONS.



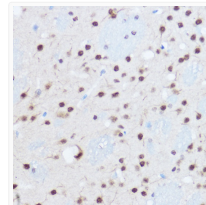
Western blot analysis of various lysates using SAFB2 Rabbit pAb (STJ114424) at 1:1000 dilution.

Secondary antibody: HRP-conjugated Goat anti-Rabbit IgG (H+L) (STJS000856) at 1:10000 dilution.

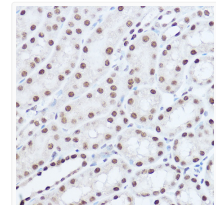
Lysates/proteins: 25 μ g per lane.
Blocking buffer: 3% nonfat dry milk in TBST.
Detection: ECL Basic Kit
Exposure time: 30s.



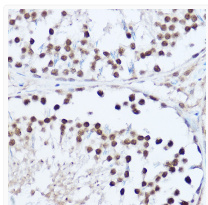
Immunohistochemistry analysis of paraffin-embedded Human placenta using SAFB2 Rabbit pAb (STJ114424) at dilution of 1:100 (40x lens). High pressure antigen retrieval performed with 0.01M Citrate Bufferr (pH 6.0) prior to immunohistochemistry staining.



Immunohistochemistry analysis of paraffin-embedded Mouse brain using SAFB2 Rabbit pAb (STJ114424) at dilution of 1:100 (40x lens). High pressure antigen retrieval performed with 0.01M Citrate Bufferr (pH 6.0) prior to immunohistochemistry staining.



Immunohistochemistry analysis of paraffin-embedded Mouse kidney using SAFB2 Rabbit pAb (STJ114424) at dilution of 1:100 (40x lens). High pressure antigen retrieval performed with 0.01M Citrate Bufferr (pH 6.0) prior to immunohistochemistry staining.



Immunohistochemistry analysis of paraffin-embedded Rat testis using SAFB2 Rabbit pAb (STJ114424) at dilution of 1:100 (40x lens). High pressure antigen retrieval performed with 0.01M Citrate Bufferr (pH 6.0) prior to immunohistochemistry staining.