

Anti-TIA1 antibody (287-386) (STJ114397)

GENERAL INFORMATION

Product Type	Primary antibodies
Applications	WB/IF/ICC/ELISA
Host / Source	Rabbit
Reactivity	Human/Mouse

PRODUCT PROPERTIES

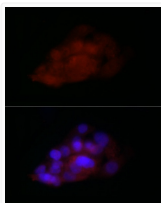
Clonality	Polyclonal
Concentration	Lot specific
Conjugation	Unconjugated
Purification	Affinity purification
Dilution Range	WB:1:500-1:1000 IF/CC:1:50-1:200 ELISA:Recommended starting concentration is 1 μ g/mL. Please optimize the concentration based on your specific assay requirements.
Formulation	PBS with 0.09% Sodium Azide, 50% Glycerol, pH7.3.
Isotype	IgG
Molecular Weight	Protein Mw: 43kDa Observed Mw: 44kDa
Storage Instruction	Store at -20°C for up to 1 year from the date of receipt, and avoid repeat freeze-thaw cycles.

TARGET INFORMATION

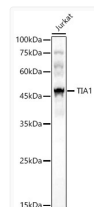
Gene ID	7072
Gene Symbol	TIA1
UniProt ID	TIA1_HUMAN
Immunogen Region	287-386
Immunogen Sequence	TLDMINPVQQNQIGYPQPY GQWGQWYGNAQQIGQYMPNG WQVPAYGMYQAWNQQGFNQ TQSSAPWMGPNYGVQPPQGG NGSMLPNQPSGYRVAGYETQ
Specificity	A synthetic peptide corresponding to a sequence within amino acids 287-386 of human TIA1 (NP_071505.2).

ADDITIONAL INFORMATION

Note **STRICTLY FOR FURTHER SCIENTIFIC RESEARCH USE ONLY (RUO). MUST NOT TO BE USED IN DIAGNOSTIC OR THERAPEUTIC APPLICATIONS.**



Immunofluorescence analysis of HepG2 cells using TIA1 Rabbit polyclonal antibody (STJ114397) at dilution of 1:100 (40x lens). Blue: DAPI for nuclear staining.



Western blot analysis of Jurkat, using TIA1 Rabbit polyclonal antibody (STJ114397) at 1:1000 dilution. Secondary antibody: HRP Goat Anti-Rabbit IgG (H+L) (STJS000856) at 1:10000 dilution. Lysates/proteins: 25 μ g per lane. Blocking buffer: 3% nonfat dry milk in TBST. Detection: ECL Basic Kit. Exposure time: 60s.