

Anti-SHH antibody (231-330) (STJ114377)

GENERAL INFORMATION

| | |
|---------------|--------------------|
| Product Type | Primary antibodies |
| Applications | WB/IF/ICC/ELISA |
| Host / Source | Rabbit |
| Reactivity | Human |

PRODUCT PROPERTIES

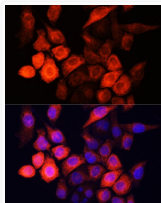
| | |
|---------------------|--|
| Clonality | Polyclonal |
| Concentration | Lot specific |
| Conjugation | Unconjugated |
| Purification | Affinity purification |
| Dilution Range | WB:1:500-1:2000 IF/CC:1:50-1:100 ELISA:Recommended starting concentration is 1 Mu g/mL. Please optimize the concentration based on your specific assay requirements. |
| Formulation | PBS with 0.02% Sodium Azide, 50% Glycerol, pH 7.3. |
| Isotype | IgG |
| Molecular Weight | Protein Mw: 50kDa Observed Mw: 50kDa |
| Storage Instruction | Store at -20°C for up to 1 year from the date of receipt, and avoid repeat freeze-thaw cycles. |

TARGET INFORMATION

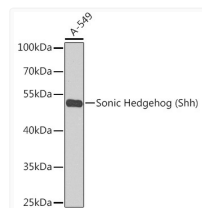
| | |
|--------------------|---|
| Gene ID | 6469 |
| Gene Symbol | SHH |
| UniProt ID | SHH_HUMAN |
| Immunogen Region | 231-330 |
| Immunogen Sequence | GRLLYSDFLTFLDRDDGAKK VFYVIETREPRERLLLLTAAH LLFVAPHNDSATGEPEASSG SGPPSGGALGPRALFASRVR PGQRVYVVAERDGDRRLLPA |
| Specificity | A synthetic peptide corresponding to a sequence within amino acids 231-330 of human Sonic Hedgehog (Shh) (NP_000184.1). |

ADDITIONAL INFORMATION

Note STRICTLY FOR FURTHER SCIENTIFIC RESEARCH USE ONLY (RUO). MUST NOT TO BE USED IN DIAGNOSTIC OR THERAPEUTIC APPLICATIONS.



Immunofluorescence analysis of HeLa cells using Sonic Hedgehog (Sonic Hedgehog (Shh)) Polyclonal Antibody (STJ114377) at dilution of 1:100 (40x lens). Blue: DAPI for nuclear staining.



Western blot analysis of extracts of A-549 cells, using Sonic Hedgehog (Sonic Hedgehog (Shh)) antibody (STJ114377) at 1:1000 dilution. Secondary antibody: HRP Goat Anti-Rabbit IgG (H+L) (STJS000856) at 1:10000 dilution. Lysates/proteins: 25 Mu g per lane. Blocking buffer: 3% nonfat dry milk in TBST. Detection: ECL Basic Kit. Exposure time: 90s.