

Anti-PTPN11 antibody (1-460) (STJ114360)

GENERAL INFORMATION

Product Type	Primary antibodies
Applications	WB/IF/ICC/IP/ELISA
Host / Source	Rabbit
Reactivity	Human/Mouse/Rat

PRODUCT PROPERTIES

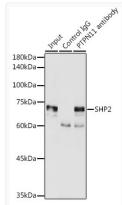
Clonality	Polyclonal
Concentration	Lot specific
Conjugation	Unconjugated
Purification	Affinity purification
Dilution Range	WB:1:500-1:2000 IF/CC:1:50-1:200 IP:0.5 Mu g-4 Mu g antibody for 200 Mu g-400 Mu g extracts of whole cells ELISA:Recommended starting concentration is 1 Mu g/mL. Please optimize the concentration based on your specific assay requirements
Formulation	PBS with 0.02% Sodium Azide, 50% Glycerol, pH7.3.
Isotype	IgG
Molecular Weight	Protein Mw: 68kDa Observed Mw: 75kDa
Storage Instruction	Store at -20°C for up to 1 year from the date of receipt, and avoid repeat freeze-thaw cycles.

TARGET INFORMATION

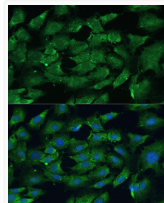
Gene ID	5781
Gene Symbol	PTPN11
UniProt ID	PTN11_HUMAN
Immunogen Region	1-460
Immunogen Sequence	MTSRRWLFHPNITGVEAENLL LTRGVDGSFLARPSKSNPGD FTLSVRRNGAVTHIKIONTG DYDLYGGGEKFNLAELVQY YMEHHGQLKEKNGDVIELKY PLNCADPTSERWFHGHLSGK EAEKLLTEKGGKHGSFLVRES QSHPGDFVLSVRTGDDKGES NDGKSKVTHVMIRCQELKYD VGGGERFDLSTLDLVEHYKKN PMVETLGLTVLQLKQPLNTR INAAEIESRVRELSKLAET
Specificity	Recombinant fusion protein containing a sequence corresponding to amino acids 1-460 of human SHP2 (NP_002825.3).

ADDITIONAL INFORMATION

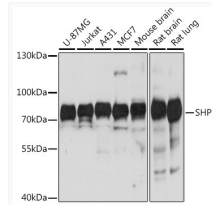
Note STRICTLY FOR FURTHER SCIENTIFIC RESEARCH USE ONLY (RUO). MUST NOT TO BE USED IN DIAGNOSTIC OR THERAPEUTIC APPLICATIONS.



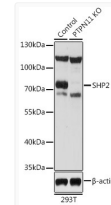
Immunoprecipitation analysis of 300 Mu g extracts of MCF7 cells using 3 Mu g SHP2 antibody (STJ114360). Western blot was performed from the immunoprecipitate using SHP2 antibody (STJ114360) at a dilution of 1:2000.



Immunofluorescence analysis of C6 cells using [KO Validated] SHP2 Rabbit polyclonal antibody (STJ114360) at a dilution of 1:100. Blue: DAPI for nuclear staining.



Western blot analysis of various lysates using [KO Validated] SHP2 Rabbit polyclonal antibody (STJ114360) at 1:1000 dilution. Secondary antibody: HRP Goat Anti-Rabbit IgG (H+L) (STJS000856) at 1:10000 dilution. Lysates/proteins: 25 Mu g per lane. Blocking buffer: 3% nonfat dry milk in TBST. Detection: ECL Basic Kit. Exposure time: 3s.



Western blot analysis of lysates from wild type (WT) and SHP2 knockout (KO) 293T cells, using [KO Validated] SHP2 Rabbit polyclonal antibody (STJ114360) at 1:1000 dilution. Secondary antibody: HRP Goat Anti-Rabbit IgG (H+L) (STJS000856) at 1:10000 dilution. Lysates/proteins: 25 Mu g per lane. Blocking buffer: 3% nonfat dry milk in TBST. Detection: ECL Basic Kit. Exposure time: 30s.