

Anti-PPP1CA antibody (230-330) (STJ114342)

GENERAL INFORMATION

Product Type	Primary antibodies
Applications	WB/IF/ICC/ELISA
Host / Source	Rabbit
Reactivity	Human/Mouse/Rat

PRODUCT PROPERTIES

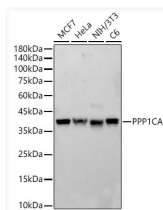
Clonality	Polyclonal
Concentration	Lot specific
Conjugation	Unconjugated
Purification	Affinity purification
Dilution Range	WB:1:500-1:1000 IF/CC:1:50-1:200 ELISA:Recommended starting concentration is 1 Mu g/mL. Please optimize the concentration based on your specific assay requirements.
Formulation	PBS with 0.05% Proclin300, 50% Glycerol, pH 7.3.
Isotype	IgG
Molecular Weight	Protein Mw: 38kDa Observed Mw: 38kDa
Storage Instruction	Store at -20°C for up to 1 year from the date of receipt, and avoid repeat freeze-thaw cycles.

TARGET INFORMATION

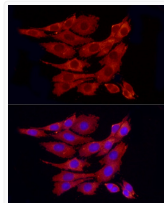
Gene ID	5499
Gene Symbol	PPP1CA
UniProt ID	PP1A_HUMAN
Immunogen Region	230-330
Immunogen Sequence	EVVAKFLHKHDLDLICRAHQ VVEDGYEFFAKRQLVTLFSA PNYCGEFDNAGAMMSVDETL MCSFQILKPADKNKGKYGQF SGLNPGGRPITPPRNSAKAK K
Specificity	Recombinant fusion protein containing a sequence corresponding to amino acids 230-330 of human PPP1CA (NP_002699.1).

ADDITIONAL INFORMATION

Note **STRICTLY FOR FURTHER SCIENTIFIC RESEARCH USE ONLY (RUO). MUST NOT TO BE USED IN DIAGNOSTIC OR THERAPEUTIC APPLICATIONS.**



Western blot analysis of various lysates, using PPP1CA antibody (STJ114342) at 1:800 dilution. Secondary antibody: HRP Goat Anti-rabbit IgG (H+L) (STJS000856) at 1:10000 dilution. Lysates/proteins: 25 Mu g per lane. Blocking buffer: 3% non-fat dry milk in TBST. Detection: ECL Basic Kit. Exposure time: 0. 5s.



Immunofluorescence analysis of PC-12 cells using PPP1CA rabbit polyclonal antibody (STJ114342) at dilution of 1:100 (40x lens). Blue: DAPI for nuclear staining.