

Anti-MSRA antibody (24-235) (STJ114338)

GENERAL INFORMATION

Product Type	Primary antibodies
Applications	WB/IF/ICC/ELISA
Host / Source	Rabbit
Reactivity	Human/Mouse/Rat

PRODUCT PROPERTIES

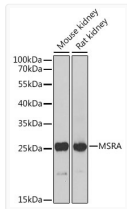
Clonality	Polyclonal
Concentration	Lot specific
Conjugation	Unconjugated
Purification	Affinity purification
Dilution Range	WB:1:500-1:2000 IF/CC:1:50-1:200 ELISA:Recommended starting concentration is 1 μ g/mL. Please optimize the concentration based on your specific assay requirements.
Formulation	PBS with 0.02% Sodium Azide, 50% Glycerol, pH 7.3.
Isotype	IgG
Molecular Weight	Protein Mw: 26kDa Observed Mw: 26kDa
Storage Instruction	Store at -20°C for up to 1 year from the date of receipt, and avoid repeat freeze-thaw cycles.

TARGET INFORMATION

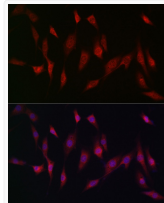
Gene ID	4482
Gene Symbol	MSRA
UniProt ID	MSRA_HUMAN
Immunogen Region	24-235
Immunogen Sequence	GNSASNIVSPQEALPGRKEQ TPVAAKHVNGNRTVEPFPE GTQMAVFGMGCFWGAERKFW VLKGVYSTQVGFAGGYTSNP TYKEVCSEKTGHAEVVRVYVY QPEHMSFEELLKVFENHDP TQGMRQGNHDHGTQYRSAYP TSAKQMEALSSKENYQKVL SEHGFGPITTDIREGQTFYY AEDYHQYLSKNPNNGYCGLG GTGVSCPVGIKK
Specificity	Recombinant fusion protein containing a sequence corresponding to amino acids 24-235 of human MSRA (NP_036463.1).

ADDITIONAL INFORMATION

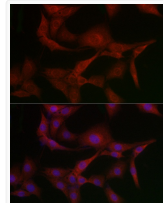
Note **STRICTLY FOR FURTHER SCIENTIFIC RESEARCH USE ONLY (RUO). MUST NOT TO BE USED IN DIAGNOSTIC OR THERAPEUTIC APPLICATIONS.**



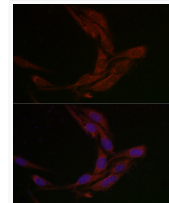
Western blot analysis of extracts of various cell lines, using MSRA Antibody (STJ114338) at 1:1000 dilution. Secondary antibody: HRP Goat Anti-rabbit IgG (H+L) (STJS000856) at 1:10000 dilution. Lysates/proteins: 25 μ g per lane. Blocking buffer: 3% non-fat dry milk in TBST. Detection: ECL Basic Kit. Exposure time: 30s.



Immunofluorescence analysis of NIH/3T3 cells using MSRA rabbit polyclonal antibody (STJ114338) at dilution of 1:200 (40x lens). Blue: DAPI for nuclear staining.



Immunofluorescence analysis of PC-12 cells using MSRA rabbit polyclonal antibody (STJ114338) at dilution of 1:200 (40x lens). Blue: DAPI for nuclear staining.



Immunofluorescence analysis of U2OS cells using MSRA rabbit polyclonal antibody (STJ114338) at dilution of 1:200 (40x lens). Blue: DAPI for nuclear staining.