

Anti-HMMR antibody (1-300) (STJ114319)

GENERAL INFORMATION

Product Type	Primary antibodies
Applications	WB/IF/ICC/ELISA
Host / Source	Rabbit
Reactivity	Human

PRODUCT PROPERTIES

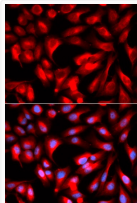
Clonality	Polyclonal
Concentration	Lot specific
Conjugation	Unconjugated
Purification	Affinity purification
Dilution Range	WB:1:500-1:2000 IF/CC:1:50-1:200 ELISA:Recommended starting concentration is 1 Mu g/mL. Please optimize the concentration based on your specific assay requirements.
Formulation	PBS with 0.05% Proclin300, 50% Glycerol, pH7.3.
Isotype	IgG
Molecular Weight	Protein Mw: 84kDa Observed Mw: 84kDa
Storage Instruction	Store at -20°C for up to 1 year from the date of receipt, and avoid repeat freeze-thaw cycles.

TARGET INFORMATION

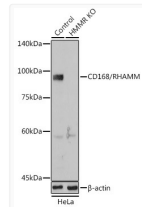
Gene ID	3161
Gene Symbol	HMMR
UniProt ID	HMMR_HUMAN
Immunogen Region	1-300
Immunogen Sequence	MSFPKAPLKRFDNPSGCAPS PGAYDVKTLVLEVLKGPVVFQK SQRFKQQKESKQNLNVDKDT TLPASARKVKSSSESKKESQK NDKDLKILEKEIRVLLQERG AQDRRIQDLETELEKMEARL NAALREKTSLSANNATLEKQ LIELTRTNELLKSKFSENGN QKNLRILSLELMKLRNKRET KMRGMMAKQEGEMKLVQVTQ RSLEESQGGKIAQLGKLVSI EKEKIDEKSETEKLLLEYIE
Specificity	Recombinant fusion protein containing a sequence corresponding to amino acids 1-300 of human CD168/RHAMM (NP_001136028.1).

ADDITIONAL INFORMATION

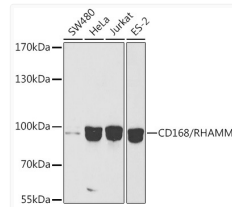
Note **STRICTLY FOR FURTHER SCIENTIFIC RESEARCH USE ONLY (RUO). MUST NOT TO BE USED IN DIAGNOSTIC OR THERAPEUTIC APPLICATIONS.**



Immunofluorescence analysis of U2OS cells using [KO Validated] CD168/RHAMM Rabbit polyclonal antibody (STJ114319). Secondary antibody: Cy3 Goat Anti-Rabbit IgG (H+L) at 1:500 dilution. Blue: DAPI for nuclear staining.



Western blot analysis of lysates from wild type (WT) and CD168/RHAMM knockout (KO) HeLa cells, using [KO Validated] CD168/RHAMM Rabbit polyclonal antibody (STJ114319) at 1:1000 dilution. Secondary antibody: HRP Goat Anti-Rabbit IgG (H+L) (STJS000856) at 1:10000 dilution. Lysates/proteins: 25 Mu g per lane. Blocking buffer: 3% nonfat dry milk in TBST. Detection: ECL Basic Kit. Exposure time: 10s.



Western blot analysis of various lysates using [KO Validated] CD168/RHAMM Rabbit polyclonal antibody (STJ114319) at 1:1000 dilution. Secondary antibody: HRP Goat Anti-Rabbit IgG (H+L) (STJS000856) at 1:10000 dilution. Lysates/proteins: 25 Mu g per lane. Blocking buffer: 3% nonfat dry milk in TBST.