

Anti-GRN antibody (20-593) (STJ114314)

GENERAL INFORMATION

| | |
|---------------|--------------------|
| Product Type | Primary antibodies |
| Applications | WB/IF/ICC/ELISA |
| Host / Source | Rabbit |
| Reactivity | Human/Mouse |

PRODUCT PROPERTIES

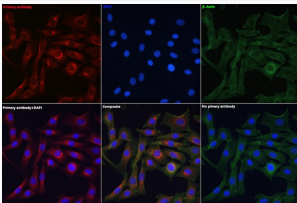
| | |
|---------------------|--|
| Clonality | Polyclonal |
| Concentration | Lot specific |
| Conjugation | Unconjugated |
| Purification | Affinity purification |
| Dilution Range | WB:1:500-1:1000 IF/CC:1:50-1:200 ELISA:Recommended starting concentration is 1 Mu g/mL. Please optimize the concentration based on your specific assay requirements. |
| Formulation | PBS with 0.02% Sodium Azide, 50% Glycerol, pH 7.3. |
| Isotype | IgG |
| Molecular Weight | Protein Mw: 64kDa Observed Mw: 88kDa |
| Storage Instruction | Store at -20°C for up to 1 year from the date of receipt, and avoid repeat freeze-thaw cycles. |

TARGET INFORMATION

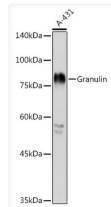
| | |
|--------------------|---|
| Gene ID | 2896 |
| Gene Symbol | GRN |
| UniProt ID | GRN_HUMAN |
| Immunogen Region | 20-593 |
| Immunogen Sequence | CPDGQFCPVACCLDPGGASY SCCRPLLDKWPTTLRSRLGG PCQVDAHCSAGHSCIFTVSG TSSCCPFPEAVACGDGHCC PRGFHCSADGRSCFQRSNN SVGAIQCPDSQFECPDFSTC CVMVDGSWGCCPMPQASCCE DRVHCCPHGAFCDLVHTRCI TPTGTHPLAKKLPARTNRA VALSSVMCPDARSRCPDGS TCCCLPSGKYGCCPMPNATC CSDHLHCCPQDVTVDLIQS |
| Specificity | Recombinant fusion protein containing a sequence corresponding to amino acids 20-310 of human Granulin (NP_002078.1). |

ADDITIONAL INFORMATION

Note **STRICTLY FOR FURTHER SCIENTIFIC RESEARCH USE ONLY (RUO). MUST NOT TO BE USED IN DIAGNOSTIC OR THERAPEUTIC APPLICATIONS.**



Immunofluorescence analysis of NIH/3T3 cells using Granulin Rabbit polyclonal antibody (STJ114314) at dilution of 1:200 (40x lens). Blue: DAPI for nuclear staining.



Western blot analysis of extracts of A-431 cells, using Granulin antibody (STJ114314) at 1:1000 dilution. Secondary antibody: HRP Goat Anti-Rabbit IgG (H+L) (STJS000856) at 1:10000 dilution. Lysates/proteins: 25 Mu g per lane. Blocking buffer: 3% nonfat dry milk in TBST. Detection: ECL Basic Kit. Exposure time: 180s.