

## Anti-CYBB antibody (101-200) (STJ114304)

### GENERAL INFORMATION

Product Type	Primary antibodies
Applications	WB/ELISA
Host / Source	Rabbit
Reactivity	Human/Mouse/Rat

### PRODUCT PROPERTIES

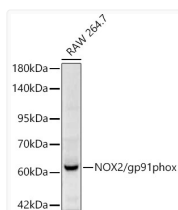
Clonality	Polyclonal
Concentration	Lot specific
Conjugation	Unconjugated
Purification	Affinity purification
Dilution Range	WB:1:500-1:2000 ELISA:Recommended starting concentration is 1 µg/mL. Please optimize the concentration based on your specific assay requirements.
Formulation	PBS with 0.09% Sodium Azide, 50% Glycerol, pH 7.3.
Isotype	IgG
Molecular Weight	Protein Mw: 65kDa Observed Mw: 60kDa
Storage Instruction	Store at -20°C for up to 1 year from the date of receipt, and avoid repeat freeze-thaw cycles.

### TARGET INFORMATION

Gene ID	<a href="#">1536</a>
Gene Symbol	<a href="#">CYBB</a>
UniProt ID	<a href="#">CY24B_HUMAN</a>
Immunogen Region	101-200
Immunogen Sequence	HKMVAWMIALHSAHTIAHL FNVEWCYNARVNNSDPYSVA LSELGDRQNESYLNFAKRI KNPEGGLYLAVTLLAGITGV VITLCLILITSSTKTIRRS
Specificity	A synthetic peptide corresponding to a sequence within amino acids 101-200 of human NOX2/gp91phox (NP_000388.2).

### ADDITIONAL INFORMATION

Note STRICTLY FOR FURTHER SCIENTIFIC RESEARCH USE ONLY (RUO). MUST NOT TO BE USED IN DIAGNOSTIC OR THERAPEUTIC APPLICATIONS.



Western blot analysis of RAW 264. 7, using NOX2/gp91phox Rabbit polyclonal antibody (STJ114304) at 1:900 dilution. Secondary antibody: HRP Goat Anti-Rabbit IgG (H+L) (STJS000856) at 1:10000 dilution. Lysates/proteins: 25µg per lane. Blocking buffer: 3% nonfat dry milk in TBST. Detection: ECL Basic Kit. Exposure time: 90s.