

## Anti-CDKN2C antibody (1-168) (STJ114292)

### GENERAL INFORMATION

Product Type	Primary antibodies
Applications	WB/ELISA
Host / Source	Rabbit
Reactivity	Human/Mouse

### PRODUCT PROPERTIES

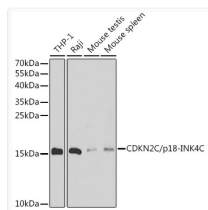
Clonality	Polyclonal
Concentration	Lot specific
Conjugation	Unconjugated
Purification	Affinity purification
Dilution Range	WB:1:500-1:2000 ELISA:Recommended starting concentration is 1 Mu g/mL. Please optimize the concentration based on your specific assay requirements.
Formulation	PBS with 0.02% Sodium Azide, 50% Glycerol, pH 7.3.
Isotype	IgG
Molecular Weight	Protein Mw: 18kDa Observed Mw: 18kDa
Storage Instruction	Store at-20°C for up to 1 year from the date of receipt, and avoid repeat freeze-thaw cycles.

### TARGET INFORMATION

Gene ID	<a href="#">1031</a>
Gene Symbol	<a href="#">CDKN2C</a>
UniProt ID	<a href="#">CDN2C_HUMAN</a>
Immunogen Region	1-168
Immunogen Sequence	MAEPWGNELASAAARGDLEQ LTSLQNNVNVNAQNGFGRT ALQVMKLGNPEIARRLLLRG ANPDLKDRTGFAVIHDAARA GFLDTLQTLLEFQADVNIED NEGNLPLHLAAKEGHLRVVE FLVKHTASNVGHRNHKGDTA CDLARLYGRNEVSLMQANG AGGATNLQ
Specificity	Recombinant fusion protein containing a sequence corresponding to amino acids 1-168 of human CDKN2C/p18-INK4C (P42773).

### ADDITIONAL INFORMATION

Note STRICTLY FOR FURTHER SCIENTIFIC RESEARCH USE ONLY (RUO). MUST NOT TO BE USED IN DIAGNOSTIC OR THERAPEUTIC APPLICATIONS.



Western blot analysis of extracts of various cell lines, using CDKN2C/p18-INK4C antibody (STJ114292) at 1:500 dilution. Secondary antibody: HRP Goat Anti-Rabbit IgG (H+L) (STJS000856) at 1:10000 dilution. Lysates/proteins: 25 Mu g per lane. Blocking buffer: 3% nonfat dry milk in TBST. Detection: ECL Enhanced Kit. Exposure time: 90s.