

Anti-ALAD antibody (1-330) (STJ114271)

GENERAL INFORMATION

Product Type	Primary antibodies
Applications	WB/IF/ICC/ELISA
Host / Source	Rabbit
Reactivity	Human/Mouse

PRODUCT PROPERTIES

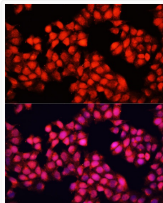
Clonality	Polyclonal
Concentration	Lot specific
Conjugation	Unconjugated
Purification	Affinity purification
Dilution Range	WB:1:500-1:2000 IF/CC:1:50-1:200 ELISA:Recommended starting concentration is 1 μ g/mL. Please optimize the concentration based on your specific assay requirements.
Formulation	PBS with 0.02% Sodium Azide, 50% Glycerol, pH 7.3.
Isotype	IgG
Molecular Weight	Protein Mw: 36kDa Observed Mw: 36kDa
Storage Instruction	Store at -20°C for up to 1 year from the date of receipt, and avoid repeat freeze-thaw cycles.

TARGET INFORMATION

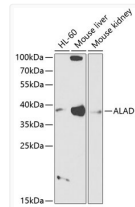
Gene ID	210
Gene Symbol	ALAD
UniProt ID	HEM2_HUMAN
Immunogen Region	1-330
Immunogen Sequence	MQPQSVLHSGYFHPLLRAWQ TATTTLNASNLIYPIFVTDV PDDIQPITSLPGVARYGVKR LEEMLRPLVEEGLRCLVIFG VPSRVPKDERGSAADSEESP AIEAIHLLRKTFFPNLLVACD VCLCPYTSHGHCGLLSENGA FRAEESRQRLAEVALAYAKA GCQVVAPSDMMDGRVEAIKE ALMAHGLGNRVSVMSYSAKF ASCFYGPFRDAAKSPAFGD RRCYQLPPGARGLALRAVD
Specificity	Recombinant fusion protein containing a sequence corresponding to amino acids 1-330 of human ALAD (NP_000022.3).

ADDITIONAL INFORMATION

Note **STRICTLY FOR FURTHER SCIENTIFIC RESEARCH USE ONLY (RUO). MUST NOT TO BE USED IN DIAGNOSTIC OR THERAPEUTIC APPLICATIONS.**



Immunofluorescence analysis of HeLa cells using ALAD antibody (STJ114271) at dilution of 1:100. Blue: DAPI for nuclear staining.



Western blot analysis of extracts of various cell lines, using ALAD antibody (STJ114271) at 1:1000 dilution. Secondary antibody: HRP Goat Anti-Rabbit IgG (H+L) (STJS000856) at 1:10000 dilution. Lysates/proteins: 25 μ g per lane. Blocking buffer: 3% nonfat dry milk in TBST. Detection: ECL Basic Kit. Exposure time: 90s.