

Anti-CRLS1 antibody (1-110) (STJ114266)

GENERAL INFORMATION

Product Type	Primary antibodies
Applications	WB/ELISA
Host / Source	Rabbit
Reactivity	Human

PRODUCT PROPERTIES

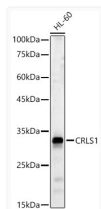
Clonality	Polyclonal
Concentration	Lot specific
Conjugation	Unconjugated
Purification	Affinity purification
Dilution Range	WB:1:200-1:500 ELISA:Recommended starting concentration is 1 Mu g/mL. Please optimize the concentration based on your specific assay requirements.
Formulation	PBS with 0.05% Proclin300, 50% Glycerol, pH 7.3.
Isotype	IgG
Molecular Weight	Protein Mw: 33kDa Observed Mw: 33kDa
Storage Instruction	Store at -20°C for up to 1 year from the date of receipt, and avoid repeat freeze-thaw cycles.

TARGET INFORMATION

Gene ID	54675
Gene Symbol	CRLS1
UniProt ID	CRLS1_HUMAN
Immunogen Region	1-110
Immunogen Sequence	MLALRVARGSWGALRGAAWA PGTRPSKRRACWALLPPVPC CLGCLAERWRLRPAALGLRL PGIGQRNHCSGAGKAAPRPA AGAGAAAEAPGGQWGPASTP SLYENPWTIP
Specificity	Recombinant fusion protein containing a sequence corresponding to amino acids 1-110 of human CRLS1 (NP_061968.1).

ADDITIONAL INFORMATION

Note STRICTLY FOR FURTHER SCIENTIFIC RESEARCH USE ONLY (RUO). MUST NOT TO BE USED IN DIAGNOSTIC OR THERAPEUTIC APPLICATIONS.



Western blot analysis of HL-60, using CRLS1 Rabbit polyclonal antibody (STJ114266) at 1:2000 dilution. Secondary antibody: HRP Goat Anti-Rabbit IgG (H+L) (STJS000856) at 1:10000 dilution. Lysates/proteins: 25 Mu g per lane. Blocking buffer: 3% nonfat dry milk in TBST. Detection: ECL Basic Kit. Exposure time: 90s.