

## Anti-SIGLEC6 antibody (27-220) (STJ114265)

### GENERAL INFORMATION

Product Type	Primary antibodies
Applications	WB/ELISA
Host / Source	Rabbit
Reactivity	Human

### PRODUCT PROPERTIES

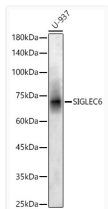
Clonality	Polyclonal
Concentration	Lot specific
Conjugation	Unconjugated
Purification	Affinity purification
Dilution Range	WB:1:500-1:1000 ELISA:Recommended starting concentration is 1 µg/mL. Please optimize the concentration based on your specific assay requirements.
Formulation	PBS with 0.02% Sodium Azide, 50% Glycerol, pH 7.3.
Isotype	IgG
Molecular Weight	Protein Mw: 50kDa Observed Mw: 72kDa
Storage Instruction	Store at -20°C for up to 1 year from the date of receipt, and avoid repeat freeze-thaw cycles.

### TARGET INFORMATION

Gene ID	<a href="#">946</a>
Gene Symbol	<a href="#">SIGLEC6</a>
UniProt ID	<a href="#">SIGL6_HUMAN</a>
Immunogen Region	27-220
Immunogen Sequence	QERRFQLEGPESLTVQEGLC VLVPCRLPTTLPASYYGYG YWFLEGADVPVATNDPDEEVQ EETRGRFHLLWDPFRKNC SL SIRDARRRDNAAYFFRLKSK WMKYGYTSSKLSVRVMAL TH RPNISIPGTLESGHPSNLTC SVPWVCEQGTPIFSWMSAA P TSLGPRTTQSSVLTITPRP QDHSTNLTCQVTFP
Specificity	Recombinant fusion protein containing a sequence corresponding to amino acids 27-220 of human SIGLEC6 (NP_942142.3).

### ADDITIONAL INFORMATION

Note **STRICTLY FOR FURTHER SCIENTIFIC RESEARCH USE ONLY (RUO). MUST NOT TO BE USED IN DIAGNOSTIC OR THERAPEUTIC APPLICATIONS.**



Western blot analysis of lysates from U-937 cells, using SIGLEC6 Rabbit polyclonal antibody (STJ114265) at 1:700 dilution. Secondary antibody: HRP Goat Anti-Rabbit IgG (H+L) (STJS00856) at 1:10000 dilution. Lysates/proteins: 25 µg per lane. Blocking buffer: 3% nonfat dry milk in TBST. Detection: ECL Basic Kit. Exposure time: 180s.