

Anti-MEF2C antibody (170-473) (STJ114263)

GENERAL INFORMATION

| | |
|---------------|-----------------------|
| Product Type | Primary antibodies |
| Applications | WB/IHC-P/IF/ICC/ELISA |
| Host / Source | Rabbit |
| Reactivity | Human/Mouse/Rat |

PRODUCT PROPERTIES

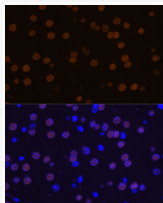
| | |
|---------------------|--|
| Clonality | Polyclonal |
| Concentration | Lot specific |
| Conjugation | Unconjugated |
| Purification | Affinity purification |
| Dilution Range | WB:1:500-1:2000 IHC-P:1:50-1:100 IF/CC:1:50-1:100 ELISA:Recommended starting concentration is 1 µg/mL. Please optimize the concentration based on your specific assay requirements. |
| Formulation | PBS with 0.02% Sodium Azide, 50% Glycerol, pH 7.3. |
| Isotype | IgG |
| Molecular Weight | Protein Mw: 51kDa Observed Mw: 45kDa |
| Storage Instruction | Store at -20°C for up to 1 year from the date of receipt, and avoid repeat freeze-thaw cycles. |

TARGET INFORMATION

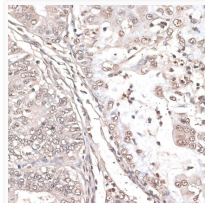
| | |
|--------------------|--|
| Gene ID | 4208 |
| Gene Symbol | MEF2C |
| UniProt ID | MEF2C_HUMAN |
| Immunogen Region | 170-473 |
| Immunogen Sequence | LPLAHPSLQRNSMSPGVTHR PPSAGNTGGLMGGDLTSGAG TSAGNGYGNPRNSPGLLVSP GNLNKNMQAKSPPMNLGMN NRKPDRLVLIIPPGSKNTMPS VSEDVLLLNQRINNSQSAQ SLATPVVSVATPTLPGQGMG GYPSAISTTYGTEYSLSSAD LSSLSGFNTASALHLGVSVTG WQQQHLHNMPPSALSQLGAC TSTHLSQSSNL |
| Specificity | Recombinant fusion protein containing a sequence corresponding to amino acids 170-380 of human MEF2C (NP_002388.2). |

ADDITIONAL INFORMATION

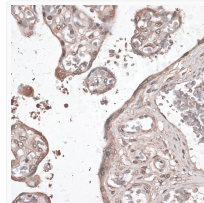
Note **STRICTLY FOR FURTHER SCIENTIFIC RESEARCH USE ONLY (RUO). MUST NOT TO BE USED IN DIAGNOSTIC OR THERAPEUTIC APPLICATIONS.**



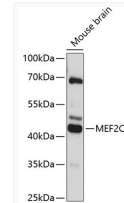
Immunofluorescence analysis of paraffin-embedded mouse brain using MEF2C Rabbit polyclonal antibody (STJ114263) at dilution of 1:100 (40x lens). Secondary antibody: Cy3 Goat Anti-Rabbit IgG (H+L) at 1:500 dilution. Blue: DAPI for nuclear staining.



Immunohistochemistry analysis of MEF2C in paraffin-embedded human endometrium cancer using MEF2C Rabbit polyclonal antibody (STJ114263) at dilution of 1:100 (40x lens). Perform microwave antigen retrieval with 10 mM PBS buffer pH 7.2 before commencing with immunohistochemistry staining protocol.



Immunohistochemistry analysis of MEF2C in paraffin-embedded human placenta using MEF2C Rabbit polyclonal antibody (STJ114263) at dilution of 1:100 (40x lens). Perform microwave antigen retrieval with 10 mM PBS buffer pH 7.2 before commencing with immunohistochemistry staining protocol.



Western blot analysis of lysates from mouse brain, using MEF2C Rabbit polyclonal antibody (STJ114263) at 1:3000 dilution. Secondary antibody: HRP Goat Anti-Rabbit IgG (H+L) (STJS000856) at 1:10000 dilution. Lysates/proteins: 25 µg per lane. Blocking buffer: 3% nonfat dry milk in TBST. Detection: ECL Basic Kit. Exposure time: 90s.