

## Anti-PALLD antibody (383-672) (STJ114240)

### GENERAL INFORMATION

Product Type	Primary antibodies
Applications	WB/IHC-P/IF/ICC/IP/ELISA
Host / Source	Rabbit
Reactivity	Human/Mouse/Rat

### PRODUCT PROPERTIES

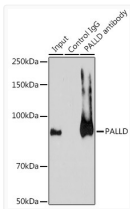
Clonality	Polyclonal
Concentration	Lot specific
Conjugation	Unconjugated
Purification	Affinity purification
Dilution Range	WB:1:500-1:1000 IHC-P:1:50-1:200 IF/CC:1:50-1:200 IP:0.5 Mu g-4 Mu g antibody for 200 Mu g-400 Mu g extracts of whole cells ELISA:Recommended starting concentration is 1 Mu g/mL. Please optimize the concentration based on your specif
Formulation	PBS with 0.01% Thimerosal, 50% Glycerol, pH 7.3.
Isotype	IgG
Molecular Weight	Protein Mw: 151kDa Observed Mw: 150kDa
Storage Instruction	Store at -20°C for up to 1 year from the date of receipt, and avoid repeat freeze-thaw cycles.

### TARGET INFORMATION

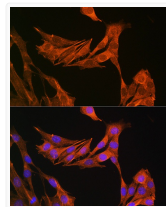
Gene ID	<a href="#">23022</a>
Gene Symbol	<a href="#">PALLD</a>
UniProt ID	<a href="#">PALLD_HUMAN</a>
Immunogen Region	383-672
Immunogen Sequence	AVNQRGRSPRSPSGHPPVRR PRSRSRDSGDENEPIQERFF RPHFLQAPGDLTVQEGKLCR MDCKVSGLPDPLSWQLDQK PVRPDSAHKMLVRENGVHSL IIEPVTSRDAGIYTCIATNR AGQNSFSLVLVAAKEAHP PVFIEKLQNTGVADGYVPVRL ECRVLGVPPPQIFWKKENES LTHSTDRVSMHQDNHGYICL LIQGATKEDAGWYTVSAKNE AGIVSCTARLDVYQWQHQQ
Specificity	Recombinant fusion protein containing a sequence corresponding to amino acids 383-672 of human PALLD (NP_001159582.1).

### ADDITIONAL INFORMATION

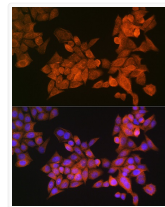
Note STRICTLY FOR FURTHER SCIENTIFIC RESEARCH USE ONLY (RUO). MUST NOT TO BE USED IN DIAGNOSTIC OR THERAPEUTIC APPLICATIONS.



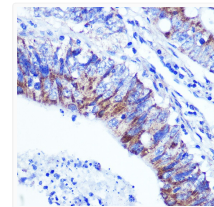
Immunoprecipitation analysis of 200 Mu g extracts of A-549 cells using 3 Mu g PALLD antibody (STJ114240). Western blot was performed from the immunoprecipitate using PALLD antibody (STJ114240) at a dilution of 1:1000.



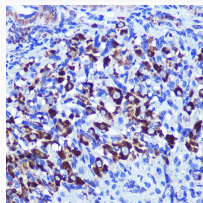
Immunofluorescence analysis of NIH-3T3 cells using PALLD Rabbit polyclonal antibody (STJ114240) at dilution of 1:100 (40x lens). Secondary antibody: Cy3 Goat Anti-Rabbit IgG (H+L) at 1:500 dilution. Blue: DAPI for nuclear staining.



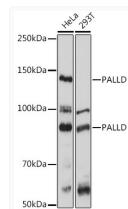
Immunofluorescence analysis of HeLa cells using PALLD Rabbit polyclonal antibody (STJ114240) at dilution of 1:100 (40x lens). Secondary antibody: Cy3 Goat Anti-Rabbit IgG (H+L) at 1:500 dilution. Blue: DAPI for nuclear staining.



Immunohistochemistry analysis of PALLD in paraffin-embedded human colon carcinoma using PALLD Rabbit polyclonal antibody (STJ114240) at dilution of 1:100 (40x lens). Perform microwave antigen retrieval with 10 mM PBS buffer pH 7. 2 before commencing with immunohistochemistry staining protocol.



Immunohistochemistry analysis of PALLD in paraffin-embedded rat ovary using PALLD Rabbit polyclonal antibody (STJ114240) at dilution of 1:100 (40x lens). Perform microwave antigen retrieval with 10 mM PBS buffer pH 7. 2 before commencing with immunohistochemistry staining protocol.



Western blot analysis of various lysates using PALLD Rabbit polyclonal antibody (STJ114240) at 1:1000 dilution. Secondary antibody: HRP Goat Anti-Rabbit IgG (H+L) (STJS000856) at 1:10000 dilution. Lysates/proteins: 25 Mu g per lane. Blocking buffer: 3% nonfat dry milk in TBST. Detection: ECL Basic Kit. Exposure time: 30s.