

Anti-SPTA1 antibody (940-1160) (STJ114233)

GENERAL INFORMATION

Product Type	Primary antibodies
Applications	WB/IHC-P/IF/ICC/ELISA
Host / Source	Rabbit
Reactivity	Human/Mouse/Rat

PRODUCT PROPERTIES

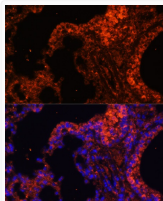
Clonality	Polyclonal
Concentration	Lot specific
Conjugation	Unconjugated
Purification	Affinity purification
Dilution Range	WB:1:500-1:2000 IHC-P:1:50-1:200 IF/CC:1:50-1:200 ELISA:Recommended starting concentration is 1 µg/mL. Please optimize the concentration based on your specific assay requirements.
Formulation	PBS with 0.09% Sodium Azide, 50% Glycerol, pH7.3.
Isotype	IgG
Molecular Weight	Protein Mw: 280kDa Observed Mw: 300kDa
Storage Instruction	Store at -20°C for up to 1 year from the date of receipt, and avoid repeat freeze-thaw cycles.

TARGET INFORMATION

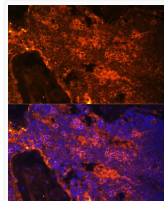
Gene ID	6708
Gene Symbol	SPTA1
UniProt ID	SPTA1_HUMAN
Immunogen Region	940-1160
Immunogen Sequence	KHEAFLDLNSFGDSMKALR NQANACQQQQAAPVEGVAGE QRMALYDFQARSPREVTMK KGDVLTLLSSINKDWWKVEA ADHQGIVPAVYVRRLLAHDEF PMLPQRRREEPGNITQRREQ IENQYRSLLDRAEERRRLL QRYNEFLLAYEAGDMLEWIQ EKKAENTGVLEDDVWELQKK FDEFQKDLNTNEPRLRDINK VADDLLFEGLLTPEGAQIRQ E
Specificity	Recombinant fusion protein containing a sequence corresponding to amino acids 940-1160 of human alpha 1 Spectrin (NP_003117.2).

ADDITIONAL INFORMATION

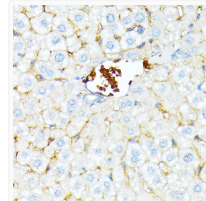
Note STRICTLY FOR FURTHER SCIENTIFIC RESEARCH USE ONLY (RUO). MUST NOT TO BE USED IN DIAGNOSTIC OR THERAPEUTIC APPLICATIONS.



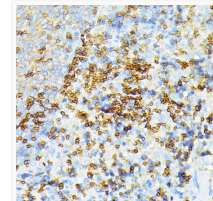
Immunofluorescence analysis of paraffin-embedded mouse lung using alpha 1 Spectrin Rabbit polyclonal antibody (STJ114233) at dilution of 1:100. Secondary antibody: Cy3 Goat Anti-Rabbit IgG (H+L) at 1:500 dilution. Blue: DAPI for nuclear staining.



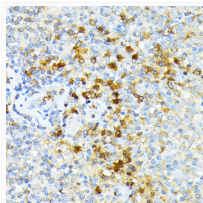
Immunofluorescence analysis of paraffin-embedded rat bone marrow using alpha 1 Spectrin Rabbit polyclonal antibody (STJ114233) at dilution of 1:100. Secondary antibody: Cy3 Goat Anti-Rabbit IgG (H+L) at 1:500 dilution. Blue: DAPI for nuclear staining.



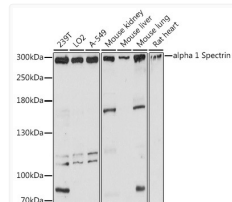
Immunohistochemistry analysis of alpha 1 Spectrin in paraffin-embedded mouse liver using alpha 1 Spectrin Rabbit polyclonal antibody (STJ114233) at dilution of 1:100 (40x lens). Perform microwave antigen retrieval with 10 mM PBS buffer pH 7.2 before commencing with immunohistochemistry staining protocol.



Immunohistochemistry analysis of alpha 1 Spectrin in paraffin-embedded rat spleen using alpha 1 Spectrin Rabbit polyclonal antibody (STJ114233) at dilution of 1:100 (40x lens). Perform microwave antigen retrieval with 10 mM PBS buffer pH 7.2 before commencing with immunohistochemistry staining protocol.



Immunohistochemistry analysis of alpha 1 Spectrin in paraffin-embedded human tonsil using alpha 1 Spectrin Rabbit polyclonal antibody (STJ114233) at dilution of 1:100 (40x lens). Perform microwave antigen retrieval with 10 mM PBS buffer pH 7.2 before commencing with immunohistochemistry staining protocol.



Western blot analysis of various lysates using alpha 1 Spectrin Rabbit polyclonal antibody (STJ114233) at 1:3000 dilution. Secondary antibody: HRP Goat Anti-Rabbit IgG (H+L) (STJS000856) at 1:10000 dilution. Lysates/proteins: 25 µg per lane. Blocking buffer: 3% nonfat dry milk in TBST. Detection: ECL Basic Kit. Exposure time: 10s.