

Anti-MYBPC3 antibody (200-400) (STJ114230)

GENERAL INFORMATION

Product Type	Primary antibodies
Applications	WB/IHC-P/ELISA
Host / Source	Rabbit
Reactivity	Mouse/Rat

PRODUCT PROPERTIES

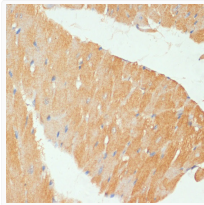
Clonality	Polyclonal
Concentration	Lot specific
Conjugation	Unconjugated
Purification	Affinity purification
Dilution Range	WB:1:500-1:2000 IHC-P:1:50-1:200 ELISA:Recommended starting concentration is 1 μ g/mL. Please optimize the concentration based on your specific assay requirements.
Formulation	PBS with 0.02% Sodium Azide, 50% Glycerol, pH 7.3.
Isotype	IgG
Molecular Weight	Protein Mw: 141kDa Observed Mw: 170kDa
Storage Instruction	Store at -20°C for up to 1 year from the date of receipt, and avoid repeat freeze-thaw cycles.

TARGET INFORMATION

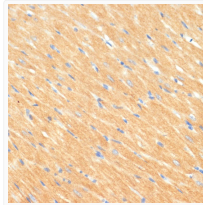
Gene ID	4607
Gene Symbol	MYBPC3
UniProt ID	MYPC3_HUMAN
Immunogen Region	200-400
Immunogen Sequence	SSKVGQHLQLHDSYDRASKV YLFELHITDAQPAFTGSYRC EVSTKDKFDCSNFNLTVHEA MGTGDLDLLSAFRRTSLAGG GRRISDSHEDTGILDFSSLL KKRDSFRTPRDSKLEAPAE DVWEILRQAPPSEYERIAFQ YGVTDLRGMLKRLKGMRRDE KKSTAFQKKLEPAYQVSKGH KIRLTVELADHDAEVKWLKN G
Specificity	Recombinant fusion protein containing a sequence corresponding to amino acids 200-400 of human MYBPC3 (NP_000247.2).

ADDITIONAL INFORMATION

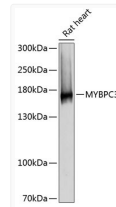
Note **STRICTLY FOR FURTHER SCIENTIFIC RESEARCH USE ONLY (RUO). MUST NOT TO BE USED IN DIAGNOSTIC OR THERAPEUTIC APPLICATIONS.**



Immunohistochemistry analysis of paraffin-embedded mouse heart using MYBPC3 antibody (STJ114230) at dilution of 1:100 (40x lens). Perform microwave antigen retrieval with 10 mM PBS buffer pH 7.2 before commencing with immunohistochemistry staining protocol.



Immunohistochemistry analysis of paraffin-embedded rat heart using MYBPC3 antibody (STJ114230) at dilution of 1:100 (40x lens). Perform microwave antigen retrieval with 10 mM PBS buffer pH 7.2 before commencing with immunohistochemistry staining protocol.



Western blot analysis of extracts of rat heart, using MYBPC3 antibody (STJ114230) at 1:3000 dilution. Secondary antibody: HRP Goat Anti-Rabbit IgG (H+L) (STJS000856) at 1:10000 dilution. Lysates/proteins: 25 μ g per lane. Blocking buffer: 3% nonfat dry milk in TBST. Detection: ECL Basic Kit. Exposure time: 1s.