

Anti-ENPEP antibody (850-950) (STJ114219)

GENERAL INFORMATION

Product Type	Primary antibodies
Applications	WB/ELISA
Host / Source	Rabbit
Reactivity	Human/Mouse

PRODUCT PROPERTIES

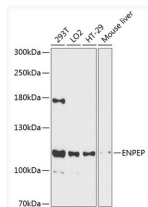
Clonality	Polyclonal
Concentration	Lot specific
Conjugation	Unconjugated
Purification	Affinity purification
Dilution Range	WB:1:500-1:2000 ELISA:Recommended starting concentration is 1 Mu g/mL. Please optimize the concentration based on your specific assay requirements.
Formulation	PBS with 0.01% Thimerosal, 50% Glycerol, pH 7.3.
Isotype	IgG
Molecular Weight	Protein Mw: 109kDa Observed Mw: 109kDa
Storage Instruction	Store at -20°C for up to 1 year from the date of receipt, and avoid repeat freeze-thaw cycles.

TARGET INFORMATION

Gene ID	2028
Gene Symbol	ENPEP
UniProt ID	AMPE_HUMAN
Immunogen Region	850-950
Immunogen Sequence	VFTVIRYISYNSYGKNMAWN WIQLNWDYLVNRYTLNRRNL GRIVTIAEPFNTELQLWQME SFFAKYPQAGAGEKPREQVL ETVKNNIEWLKQHRNTIREW F
Specificity	A synthetic peptide corresponding to a sequence within amino acids 850-950 of human ENPEP (NP_001968.3).

ADDITIONAL INFORMATION

Note STRICTLY FOR FURTHER SCIENTIFIC RESEARCH USE ONLY (RUO). MUST NOT TO BE USED IN DIAGNOSTIC OR THERAPEUTIC APPLICATIONS.



Western blot analysis of various lysates using ENPEP Rabbit polyclonal antibody (STJ114219) at 1:3000 dilution. Secondary antibody: HRP Goat Anti-Rabbit IgG (H+L) (STJS000856) at 1:10000 dilution. Lysates/proteins: 25 Mu g per lane. Blocking buffer: 3% nonfat dry milk in TBST. Detection: ECL Basic Kit. Exposure time: 90s.