

Anti-BST2 antibody (49-161) (STJ114200)

GENERAL INFORMATION

Product Type	Primary antibodies
Applications	WB/IHC-P/IF/ICC/ELISA
Host / Source	Rabbit
Reactivity	Human/Mouse

PRODUCT PROPERTIES

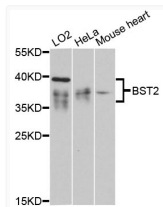
Clonality	Polyclonal
Concentration	Lot specific
Conjugation	Unconjugated
Purification	Affinity purification
Dilution Range	WB:1:500-1:2000 IHC-P:1:50-1:200 IF/ICC:1:50-1:200 ELISA:Recommended starting concentration is 1 µg/mL. Please optimize the concentration based on your specific assay requirements.
Formulation	PBS with 0.05% Proclin300, 50% Glycerol, pH 7.3.
Isotype	IgG
Molecular Weight	Protein Mw: 20kDa Observed Mw: 35-40kDa
Storage Instruction	Store at -20°C for up to 1 year from the date of receipt, and avoid repeat freeze-thaw cycles.

TARGET INFORMATION

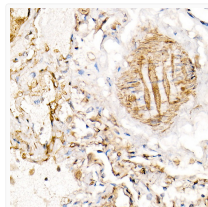
Gene ID	684
Gene Symbol	BST2
UniProt ID	BST2_HUMAN
Immunogen Region	49-161
Immunogen Sequence	NSEACRDGLRAVMECRNVTH LLQQLTEAQKGFQDVEAQA ATCNHTVMALMASLDAEKAQ GQKKVEELEGIEITLNLHKLQ DASAVERLRRENQVLSVRI ADKYYPPSSQDSS
Specificity	Recombinant fusion protein containing a sequence corresponding to amino acids 49-161 of human BST2 (NP_004326.1).

ADDITIONAL INFORMATION

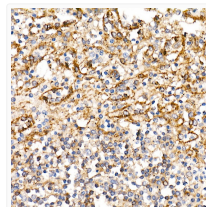
Note **STRICTLY FOR FURTHER SCIENTIFIC RESEARCH USE ONLY (RUO). MUST NOT TO BE USED IN DIAGNOSTIC OR THERAPEUTIC APPLICATIONS.**



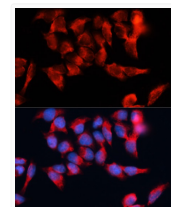
Western blot analysis of extracts of various cell lines, using BST2 antibody (STJ114200) at 1:3000 dilution. Secondary antibody: HRP Goat Anti-rabbit IgG (H+L) (STJS000856) at 1:10000 dilution. Lysates/proteins: 25 µg per lane. Blocking buffer: 3% non-fat dry milk in TBST. Detection: ECL Basic Kit. Exposure time: 90s.



Immunohistochemistry analysis of paraffin-embedded human lung using BST2 rabbit polyclonal antibody (STJ114200) at dilution of 1:100 (40x lens). Perform high pressure antigen retrieval with 10 mM citrate buffer pH 6. 0 before commencing with immunohistochemistry staining protocol.



Immunohistochemistry analysis of paraffin-embedded human spleen using BST2 rabbit polyclonal antibody (STJ114200) at dilution of 1:100 (40x lens). Perform high pressure antigen retrieval with 10 mM citrate buffer pH 6. 0 before commencing with immunohistochemistry staining protocol.



Immunofluorescence analysis of HeLa cells using BST2 antibody (STJ114200) at dilution of 1:100. Blue: DAPI for nuclear staining.