

Anti-VEGFA antibody (27-126) (STJ114190)

GENERAL INFORMATION

Product Type	Primary antibodies
Applications	WB/IF/ICC/ELISA
Host / Source	Rabbit
Reactivity	Human/Mouse/Rat

PRODUCT PROPERTIES

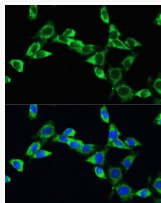
Clonality	Polyclonal
Concentration	Lot specific
Conjugation	Unconjugated
Purification	Affinity purification
Dilution Range	WB:1:500-1:1000 IF/CC:1:50-1:200 ELISA:Recommended starting concentration is 1 µg/mL. Please optimize the concentration based on your specific assay requirements.
Formulation	PBS with 0.09% Sodium Azide, 50% Glycerol, pH7.3.
Isotype	IgG
Molecular Weight	Protein Mw: 27kDa Observed Mw: 16kDa/20kDa/23kDa/26kDa
Storage Instruction	Store at -20°C for up to 1 year from the date of receipt, and avoid repeat freeze-thaw cycles.

TARGET INFORMATION

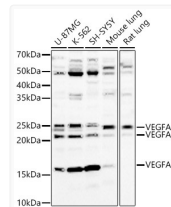
Gene ID	7422
Gene Symbol	VEGFA
UniProt ID	VEGFA_HUMAN
Immunogen Region	27-126
Immunogen Sequence	GLECVPTTESNITMQIMRIK PHGQHQIGEMSFLOHNKCEC RPKKDRARQENPCGPGCSERR KHLFVQDPQTCKCCKNTDS RCKARQLELNERTCRCDKPR R
Specificity	Recombinant fusion protein containing a sequence corresponding to amino acids 91-191 of human VEGFA (NP_001165097.1).

ADDITIONAL INFORMATION

Note **STRICTLY FOR FURTHER SCIENTIFIC RESEARCH USE ONLY (RUO). MUST NOT TO BE USED IN DIAGNOSTIC OR THERAPEUTIC APPLICATIONS.**



Immunofluorescence analysis of NIH/3T3 cells using VEGFA Rabbit polyclonal antibody (STJ114190) at dilution of 100 (40x lens). Blue: DAPI for nuclear staining.



Western blot analysis of various lysates, using VEGFA Rabbit polyclonal antibody (STJ114190) at 1:1000 dilution. Secondary antibody: HRP Goat Anti-Rabbit IgG (H+L) (STJS000856) at 1:10000 dilution. Lysates/proteins: 25 µg per lane. Blocking buffer: 3% nonfat dry milk in TBST. Detection: ECL Basic Kit. Exposure time: 30s.