

Anti-MICU2 antibody (215-434) (STJ114090)

GENERAL INFORMATION

Product Type	Primary antibodies
Applications	WB/ELISA
Host / Source	Rabbit
Reactivity	Human

PRODUCT PROPERTIES

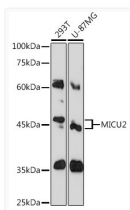
Clonality	Polyclonal
Concentration	Lot specific
Conjugation	Unconjugated
Purification	Affinity purification
Dilution Range	WB:1:500-1:2000 ELISA:Recommended starting concentration is 1 Mu g/mL. Please optimize the concentration based on your specific assay requirements.
Formulation	PBS with 0.05% Proclin300, 50% Glycerol, pH 7.3.
Isotype	IgG
Molecular Weight	Protein Mw: 50kDa Observed Mw: 45kDa
Storage Instruction	Store at -20°C for up to 1 year from the date of receipt, and avoid repeat freeze-thaw cycles.

TARGET INFORMATION

Gene ID	221154
Gene Symbol	MICU2
UniProt ID	MICU2_HUMAN
Immunogen Region	215-434
Immunogen Sequence	LQKIISKQDDLMTVKTNETG YQEAIKPEINTTLQMRFF GKRGRKRLHYKEFRFRFMENL QTEIQEMEFLLQFSKGLSFMR KEDFAEWLLFFNTNENKDIY WKNVREKLSAGESISLDEFK SFCHFTTHLEDFAIAMQMFS LAHRPVRLAEFKRAVKVATG QELSNILDTVFKIFDLGD ECLSHEEFLGVLKRNMRHRL WVPQHQSIEYWKCVKKEI KGVKEVWKQAGKGLF
Specificity	A synthetic peptide corresponding to a sequence within amino acids 200-300 of human MICU2 (NP_689939.1).

ADDITIONAL INFORMATION

Note STRICTLY FOR FURTHER SCIENTIFIC RESEARCH USE ONLY (RUO). MUST NOT TO BE USED IN DIAGNOSTIC OR THERAPEUTIC APPLICATIONS.



Western blot analysis of extracts of various cell lines, using MICU2 Rabbit polyclonal antibody (STJ114090) at 1:1000 dilution. Secondary antibody: HRP Goat Anti-Rabbit IgG (H+L) (STJS000856) at 1:10000 dilution. Lysates/proteins: 25 Mu g per lane. Blocking buffer: 3% nonfat dry milk in TBST. Detection: ECL Basic Kit. Exposure time: 60s.