

## Anti-WSB1 antibody (182-421) (STJ114087)

### GENERAL INFORMATION

Product Type	Primary antibodies
Applications	WB/ELISA
Host / Source	Rabbit
Reactivity	Human

### PRODUCT PROPERTIES

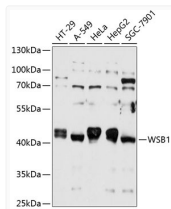
Clonality	Polyclonal
Concentration	Lot specific
Conjugation	Unconjugated
Purification	Affinity purification
Dilution Range	WB:1:500-1:2000 ELISA:Recommended starting concentration is 1 Mu g/mL. Please optimize the concentration based on your specific assay requirements.
Formulation	PBS with 0.01% Thimerosal, 50% Glycerol, pH 7.3.
Isotype	IgG
Molecular Weight	Protein Mw: 47kDa Observed Mw: 47kDa
Storage Instruction	Store at -20°C for up to 1 year from the date of receipt, and avoid repeat freeze-thaw cycles.

### TARGET INFORMATION

Gene ID	<a href="#">26118</a>
Gene Symbol	<a href="#">WSB1</a>
UniProt ID	<a href="#">WSB1_HUMAN</a>
Immunogen Region	182-421
Immunogen Sequence	GSLILVSASRDKTLRVWDLK DDGNMMKVLRGHQNWVYSCA FSPDSSMLCSVGASKAVFLW NMDKYTMIRKLEGHHHDVVA CDFSPDGALLATASYDTRVY IWDPHNGDILMEFGHLFPPP TPIFAGGANDRWVRSVSFSH DGLHVASLADDKMVRFRWRID EDYPVQVAPLSNGLCCAFST DGSVLAAGTHDGSVYFWATP RQVPSLQHLCRMSIRRVMPPT QEVQELPIPSKLLFLSYR
Specificity	Recombinant fusion protein containing a sequence corresponding to amino acids 182-421 of human WSB1 (NP_056441.6).

### ADDITIONAL INFORMATION

Note **STRICTLY FOR FURTHER SCIENTIFIC RESEARCH USE ONLY (RUO). MUST NOT TO BE USED IN DIAGNOSTIC OR THERAPEUTIC APPLICATIONS.**



Western blot analysis of various lysates using WSB1 Rabbit polyclonal antibody (STJ114087) at 1:1000 dilution. \_Secondary antibody: HRP Goat Anti-Rabbit IgG (H+L) (STJS000856) at 1:10000 dilution. \_Lysates/proteins: 25 Mu g per lane. \_Blocking buffer: 3% nonfat dry milk in TBST. \_Detection: ECL Enhanced Kit. \_Exposure time: 10s.