

Anti-SNRPA1 antibody (1-220) (STJ114054)

GENERAL INFORMATION

Product Type	Primary antibodies
Applications	WB/IHC-P/ELISA
Host / Source	Rabbit
Reactivity	Human/Mouse/Rat

PRODUCT PROPERTIES

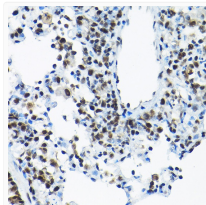
Clonality	Polyclonal
Concentration	Lot specific
Conjugation	Unconjugated
Purification	Affinity purification
Dilution Range	WB:1:500-1:2000 IHC-P:1:50-1:200 ELISA:Recommended starting concentration is 1 µg/mL. Please optimize the concentration based on your specific assay requirements.
Formulation	PBS with 0.01% Thimerosal, 50% Glycerol, pH 7.3.
Isotype	IgG
Molecular Weight	Protein Mw: 28kDa Observed Mw: 28kDa
Storage Instruction	Store at -20°C for up to 1 year from the date of receipt, and avoid repeat freeze-thaw cycles.

TARGET INFORMATION

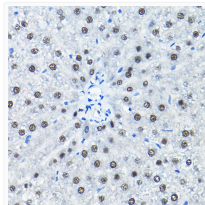
Gene ID	6627
Gene Symbol	SNRPA1
UniProt ID	RU2A_HUMAN
Immunogen Region	1-220
Immunogen Sequence	MVKLTAELIEQAAQYTNAVR DRELDLRGYKIPVIENLGAT LDQFDAIDFSDNEIRKLDGF PLLRLRLKTLVNNNRICRIG EGLDQALPCLTELILTNNSL VELGLDPLASLKLSTLYLSI LRNPVTNKKHYRLVVIYKVP QVRVLDLFQKVKLKERQEA EK MFKGKRGQAQLAKDIARRSKT FNPAGALPTDKKKGGPSPGD VEAIKNAIANASTLAEVERL
Specificity	Recombinant fusion protein containing a sequence corresponding to amino acids 1-220 of human SNRPA1 (NP_003081.2).

ADDITIONAL INFORMATION

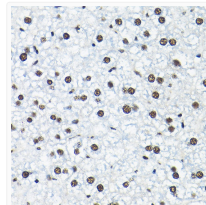
Note STRICTLY FOR FURTHER SCIENTIFIC RESEARCH USE ONLY (RUO). MUST NOT TO BE USED IN DIAGNOSTIC OR THERAPEUTIC APPLICATIONS.



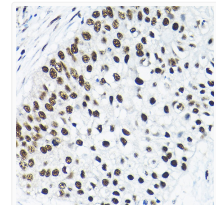
Immunohistochemistry analysis of SNRPA1 in paraffin-embedded rat lung using SNRPA1 Rabbit polyclonal antibody (STJ114054) at dilution of 1:200 (40x lens). Perform high pressure antigen retrieval with 10 mM citrate buffer pH 6.0 before commencing with immunohistochemistry staining protocol.



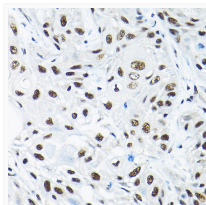
Immunohistochemistry analysis of SNRPA1 in paraffin-embedded rat liver using SNRPA1 Rabbit polyclonal antibody (STJ114054) at dilution of 1:200 (40x lens). Perform high pressure antigen retrieval with 10 mM citrate buffer pH 6.0 before commencing with immunohistochemistry staining protocol.



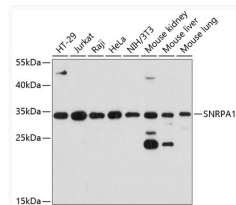
Immunohistochemistry analysis of SNRPA1 in paraffin-embedded mouse liver using SNRPA1 Rabbit polyclonal antibody (STJ114054) at dilution of 1:200 (40x lens). Perform high pressure antigen retrieval with 10 mM citrate buffer pH 6.0 before commencing with immunohistochemistry staining protocol.



Immunohistochemistry analysis of SNRPA1 in paraffin-embedded human lung cancer using SNRPA1 Rabbit polyclonal antibody (STJ114054) at dilution of 1:200 (40x lens). Perform high pressure antigen retrieval with 10 mM citrate buffer pH 6.0 before commencing with immunohistochemistry staining protocol.



Immunohistochemistry analysis of SNRPA1 in paraffin-embedded human esophageal cancer using SNRPA1 Rabbit polyclonal antibody (STJ114054) at dilution of 1:200 (40x lens). Perform high pressure antigen retrieval with 10 mM citrate buffer pH 6.0 before commencing with immunohistochemistry staining protocol.



Western blot analysis of various lysates using SNRPA1 Rabbit polyclonal antibody (STJ114054) at 1:3000 dilution. Secondary antibody: HRP Goat Anti-Rabbit IgG (H+L) (STJS000856) at 1:10000 dilution. Lysates/proteins: 25 µg per lane. Blocking buffer: 3% nonfat dry milk in TBST. Detection: ECL Basic Kit. Exposure time: 10s.