

Anti-COPZ1 antibody (1-177) (STJ114041)

GENERAL INFORMATION

Product Type	Primary antibodies
Applications	WB/IF/ICC/ELISA
Host / Source	Rabbit
Reactivity	Human/Mouse

PRODUCT PROPERTIES

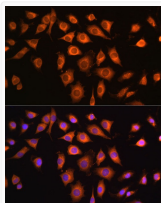
Clonality	Polyclonal
Concentration	Lot specific
Conjugation	Unconjugated
Purification	Affinity purification
Dilution Range	WB:1:500-1:2000 IF/CC:1:50-1:200 ELISA:Recommended starting concentration is 1 Mu g/mL. Please optimize the concentration based on your specific assay requirements.
Formulation	PBS with 0.01% Thimerosal, 50% Glycerol, pH 7.3.
Isotype	IgG
Molecular Weight	Protein Mw: 20kDa Observed Mw: 19kDa
Storage Instruction	Store at -20°C for up to 1 year from the date of receipt, and avoid repeat freeze-thaw cycles.

TARGET INFORMATION

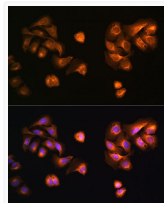
Gene ID	22818
Gene Symbol	COPZ1
UniProt ID	COPZ1_HUMAN
Immunogen Region	1-177
Immunogen Sequence	MEALILEPSLYTVKAILILD NDGDRLFAKYDDTYPVSVE QKAFKFNIFNKTHRTDSEIA LLEGLTVVYKSSIDLDFYVI GSSYENELMLMAVLNCLFDS LSQMLRKNVEKRALLENMEG LFLAVDEIVDGGVILESDPQ QVVHRVALRGEDVPLTEQTV SQVLQSAKEQIKWLLR
Specificity	Recombinant fusion protein containing a sequence corresponding to amino acids 1-177 of human COPZ1 (NP_057141.1).

ADDITIONAL INFORMATION

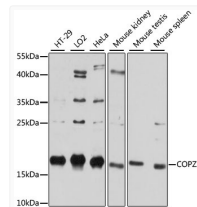
Note **STRICTLY FOR FURTHER SCIENTIFIC RESEARCH USE ONLY (RUO). MUST NOT TO BE USED IN DIAGNOSTIC OR THERAPEUTIC APPLICATIONS.**



Immunofluorescence analysis of L929 cells using COPZ1 Rabbit polyclonal antibody (STJ114041) at dilution of 1:100. Secondary antibody: Cy3 Goat Anti-Rabbit IgG (H+L) at 1:500 dilution. Blue: DAPI for nuclear staining.



Immunofluorescence analysis of U2OS cells using COPZ1 Rabbit polyclonal antibody (STJ114041) at dilution of 1:100. Secondary antibody: Cy3 Goat Anti-Rabbit IgG (H+L) at 1:500 dilution. Blue: DAPI for nuclear staining.



Western blot analysis of various lysates using COPZ1 Rabbit polyclonal antibody (STJ114041) at 1:3000 dilution. Secondary antibody: HRP Goat Anti-Rabbit IgG (H+L) (STJS000856) at 1:10000 dilution. Lysates/proteins: 25 Mu g per lane. Blocking buffer: 3% nonfat dry milk in TBST. Detection: ECL Basic Kit. Exposure time: 10s.