

Anti-CHD9 antibody (85-190) (STJ114040)

GENERAL INFORMATION

Product Type	Primary antibodies
Applications	WB/ELISA
Host / Source	Rabbit
Reactivity	Human/Mouse

PRODUCT PROPERTIES

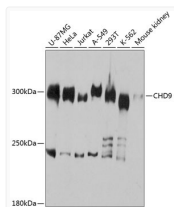
Clonality	Polyclonal
Concentration	Lot specific
Conjugation	Unconjugated
Purification	Affinity purification
Dilution Range	WB:1:500-1:2000 ELISA:Recommended starting concentration is 1 µg/mL. Please optimize the concentration based on your specific assay requirements.
Formulation	PBS with 0.01% Thimerosal, 50% Glycerol, pH 7.3.
Isotype	IgG
Molecular Weight	Protein Mw: 326kDa Observed Mw: 300kDa
Storage Instruction	Store at -20°C for up to 1 year from the date of receipt, and avoid repeat freeze-thaw cycles.

TARGET INFORMATION

Gene ID	80205
Gene Symbol	CHD9
UniProt ID	CHD9_HUMAN
Immunogen Region	85-190
Immunogen Sequence	SFGSPA EH VLS PH SQ FN CSP IHPQ NQ P NGL FPD VSD GS PM WGHQTATTIS NQ NGS PFF H Q GHSHSMHQ NK SFVAH HD FAL FQANE Q T Q CTSLRS Q NRN NLN P G Q
Specificity	Recombinant fusion protein containing a sequence corresponding to amino acids 85-190 of human CHD9 (NP_079410.4).

ADDITIONAL INFORMATION

Note STRICTLY FOR FURTHER SCIENTIFIC RESEARCH USE ONLY (RUO). MUST NOT TO BE USED IN DIAGNOSTIC OR THERAPEUTIC APPLICATIONS.



Western blot analysis of various lysates using CHD9 Rabbit polyclonal antibody (STJ114040) at 1:3000 dilution. Secondary antibody: HRP Goat Anti-Rabbit IgG (H+L) (STJS000856) at 1:10000 dilution. Lysates/proteins: 25 µg per lane. Blocking buffer: 3% nonfat dry milk in TBST. Detection: ECL Basic Kit. Exposure time: 1s.