

Anti-SLC25A24 antibody (1-200) (STJ114031)

GENERAL INFORMATION

Product Type	Primary antibodies
Applications	WB/IF/ICC/ELISA
Host / Source	Rabbit
Reactivity	Human/Mouse/Rat

PRODUCT PROPERTIES

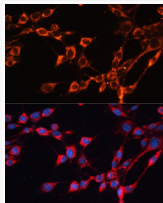
Clonality	Polyclonal
Concentration	Lot specific
Conjugation	Unconjugated
Purification	Affinity purification
Dilution Range	WB:1:500-1:2000 IF/CC:1:50-1:200 ELISA:Recommended starting concentration is 1 µg/mL. Please optimize the concentration based on your specific assay requirements.
Formulation	PBS with 0.01% Thimerosal, 50% Glycerol, pH 7.3.
Isotype	IgG
Molecular Weight	Protein Mw: 53kDa Observed Mw: 50kDa
Storage Instruction	Store at -20°C for up to 1 year from the date of receipt, and avoid repeat freeze-thaw cycles.

TARGET INFORMATION

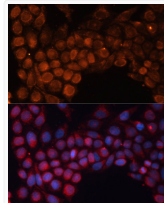
Gene ID	29957
Gene Symbol	SLC25A24
UniProt ID	SCMC1_HUMAN
Immunogen Region	1-200
Immunogen Sequence	MLRWLRDFVLPTAACQDAEQ PTRYETLFAQALDRNGDGVVD IGELQEGLRNLGIPLGQDAE EKIFTTGVDNKGDKLDFEEF MKYLKDHEKKMKLAFKSLDK NNDGKIEASEIVQSLQTLGL TISEQQAEILQSIDVDGTM TVDWNWRDYFLFNPVTDIE EIIRFWKHSTGIDIGDSLTI PDEFTDEKSGQWWRQLLA
Specificity	Recombinant fusion protein containing a sequence corresponding to amino acids 1-200 of human SLC25A24 (NP_037518.3).

ADDITIONAL INFORMATION

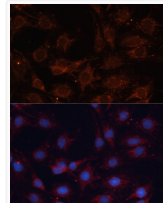
Note STRICTLY FOR FURTHER SCIENTIFIC RESEARCH USE ONLY (RUO). MUST NOT TO BE USED IN DIAGNOSTIC OR THERAPEUTIC APPLICATIONS.



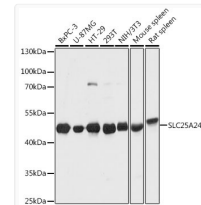
Immunofluorescence analysis of NIH/3T3 cells using SLC25A24 Rabbit polyclonal antibody (STJ114031) at dilution of 1:100. Secondary antibody: Cy3 Goat Anti-Rabbit IgG (H+L) at 1:500 dilution. Blue: DAPI for nuclear staining.



Immunofluorescence analysis of HeLa cells using SLC25A24 Rabbit polyclonal antibody (STJ114031) at dilution of 1:100. Secondary antibody: Cy3 Goat Anti-Rabbit IgG (H+L) at 1:500 dilution. Blue: DAPI for nuclear staining.



Immunofluorescence analysis of C6 cells using SLC25A24 Rabbit polyclonal antibody (STJ114031) at dilution of 1:100. Secondary antibody: Cy3 Goat Anti-Rabbit IgG (H+L) at 1:500 dilution. Blue: DAPI for nuclear staining.



Western blot analysis of various lysates using SLC25A24 Rabbit polyclonal antibody (STJ114031) at 1:1000 dilution. Secondary antibody: HRP Goat Anti-Rabbit IgG (H+L) (STJS000856) at 1:10000 dilution. Lysates/proteins: 25 µg per lane. Blocking buffer: 3% nonfat dry milk in TBST. Detection: ECL Basic Kit. Exposure time: 1s.