

Anti-AIFM2 antibody (43-371) (STJ114022)

GENERAL INFORMATION

Product Type	Primary antibodies
Applications	WB/IHC-P/ELISA
Host / Source	Rabbit
Reactivity	Human/Mouse/Rat

PRODUCT PROPERTIES

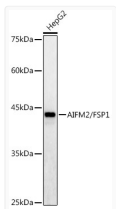
Clonality	Polyclonal
Concentration	Lot specific
Conjugation	Unconjugated
Purification	Affinity purification
Dilution Range	WB:1:500-1:1000 IHC-P:1:50-1:200 ELISA:Recommended starting concentration is 1 µg/mL. Please optimize the concentration based on your specific assay requirements.
Formulation	PBS with 0.05% Proclin300, 50% Glycerol, pH 7.3.
Isotype	IgG
Molecular Weight	Protein Mw: 41kDa Observed Mw: 41kDa
Storage Instruction	Store at -20°C for up to 1 year from the date of receipt, and avoid repeat freeze-thaw cycles.

TARGET INFORMATION

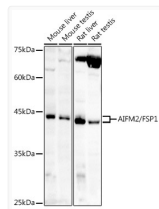
Gene ID	84883
Gene Symbol	AIFM2
UniProt ID	FSP1_HUMAN
Immunogen Region	43-371
Immunogen Sequence	KDSFHHNVAALRASVETGFA KKTFFISYSVTFKDNFRQGLV VGIIDLKNQMVLLQGGEALPF SHLLLATGSTGPFPGKFNEV SSQQAIIQAYEDMVRQVQRS RFIVVVGGGSAGVEMAAEIK TEYPEKEVTLIHSQVALADK ELLPSVRQEVKEILLRKGVQ LLLSERVSNLEELPLNEYRE YIKVQTDKGEVATNLVILC TGIKINSSAYRKAFESRLAS SGALRVNEHLQVEGHSNVY
Specificity	Recombinant fusion protein containing a sequence corresponding to amino acids 43-371 of human AIFM2/FSP1/AMID/AMID (NP_116186.1).

ADDITIONAL INFORMATION

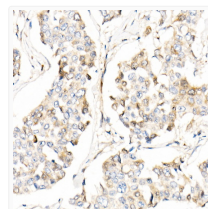
Note **STRICTLY FOR FURTHER SCIENTIFIC RESEARCH USE ONLY (RUO). MUST NOT TO BE USED IN DIAGNOSTIC OR THERAPEUTIC APPLICATIONS.**



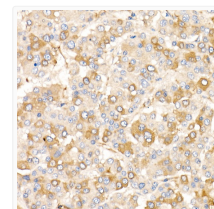
Western blot analysis of extracts of HepG2 cells, using AIFM2/FSP1 antibody (STJ114022) at 1:1000 dilution. Secondary antibody: HRP Goat Anti-rabbit IgG (H+L) (STJS000856) at 1:10000 dilution. Lysates/proteins: 25 µg per lane. Blocking buffer: 3% non-fat dry milk in TBST. Detection: ECL Enhanced Kit. Exposure time: 180s.



Western blot analysis of extracts of various cell lines, using AIFM2/FSP1 antibody (STJ114022) at 1:1000 dilution. Secondary antibody: HRP Goat Anti-rabbit IgG (H+L) (STJS000856) at 1:10000 dilution. Lysates/proteins: 25 µg per lane. Blocking buffer: 3% non-fat dry milk in TBST. Detection: ECL Enhanced Kit. Exposure time: 60s.



Immunohistochemistry analysis of paraffin-embedded human breast cancer using AIFM2/FSP1 rabbit polyclonal antibody (STJ114022) at dilution of 1:20 (40x lens). Perform high pressure antigen retrieval with 10 mM citrate buffer pH 6.0 before commencing with immunohistochemistry staining protocol.



Immunohistochemistry analysis of paraffin-embedded human liver cancer using AIFM2/FSP1 rabbit polyclonal antibody (STJ114022) at dilution of 1:20 (40x lens). Perform high pressure antigen retrieval with 10 mM citrate buffer pH 6.0 before commencing with immunohistochemistry staining protocol.