

Anti-ACAP2 antibody (50-160) (STJ114021)

GENERAL INFORMATION

Product Type	Primary antibodies
Applications	WB/IF/ICC/ELISA
Host / Source	Rabbit
Reactivity	Human/Mouse

PRODUCT PROPERTIES

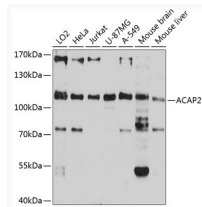
Clonality	Polyclonal
Concentration	Lot specific
Conjugation	Unconjugated
Purification	Affinity purification
Dilution Range	WB:1:500-1:2000 IF/CC:1:50-1:200 ELISA:Recommended starting concentration is 1 Mu g/mL. Please optimize the concentration based on your specific assay requirements.
Formulation	PBS with 0.01% Thimerosal, 50% Glycerol, pH 7.3.
Isotype	IgG
Molecular Weight	Protein Mw: 88kDa Observed Mw: 115kDa
Storage Instruction	Store at -20°C for up to 1 year from the date of receipt, and avoid repeat freeze-thaw cycles.

TARGET INFORMATION

Gene ID	23527
Gene Symbol	ACAP2
UniProt ID	ACAP2_HUMAN
Immunogen Region	50-160
Immunogen Sequence	KAFCVANKQFMNGIRDLAQY SSNDVVETSLTKFSDSLQE MINFHTILFDQTQRSIKAQL QNFVKEDLRKFKDAKKQFEK VSEEKENALVKNAQVQRNKQ HEVEEATNILT
Specificity	Recombinant fusion protein containing a sequence corresponding to amino acids 50-160 of human ACAP2 (NP_036419.3).

ADDITIONAL INFORMATION

Note **STRICTLY FOR FURTHER SCIENTIFIC RESEARCH USE ONLY (RUO). MUST NOT TO BE USED IN DIAGNOSTIC OR THERAPEUTIC APPLICATIONS.**



Western blot analysis of various lysates using ACAP2 Rabbit pAb (STJ114021) at 1:1000 dilution.

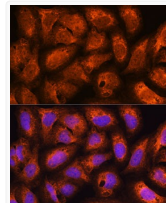
Secondary antibody: HRP-conjugated Goat anti-Rabbit IgG (H+L) (STJS000856) at 1:10000 dilution.

Lysates/proteins: 25 Mu g per lane.

Blocking buffer: 3% nonfat dry milk in TBST.

Detection: ECL Basic Kit

Exposure time: 5s.



Immunofluorescence analysis of U2OS cells using ACAP2 Rabbit pAb (STJ114021) at dilution of 1:100. Secondary antibody: Cy3-conjugated Goat anti-Rabbit IgG (H+L) (STJS001166) at 1:500 dilution. Blue: DAPI for nuclear staining.