

## Anti-RPS24 antibody (1-130) (STJ114017)

### GENERAL INFORMATION

Product Type	Primary antibodies
Applications	WB/IHC-P/IP/ELISA
Host / Source	Rabbit
Reactivity	Human/Mouse/Rat

### PRODUCT PROPERTIES

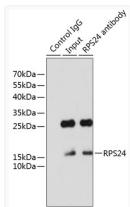
Clonality	Polyclonal
Concentration	Lot specific
Conjugation	Unconjugated
Purification	Affinity purification
Dilution Range	WB:1:500-1:2000 IHC-P:1:50-1:200 IP:0.5 Mu g-4 Mu g antibody for 200 Mu g-400 Mu g extracts of whole cells ELISA:Recommended starting concentration is 1 Mu g/mL. Please optimize the concentration based on your specific assay requirements.
Formulation	PBS with 0.01% Thimerosal, 50% Glycerol, pH 7.3.
Isotype	IgG
Molecular Weight	Protein Mw: 15kDa Observed Mw: 19kDa
Storage Instruction	Store at -20°C for up to 1 year from the date of receipt, and avoid repeat freeze-thaw cycles.

### TARGET INFORMATION

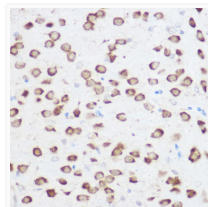
Gene ID	<a href="#">6229</a>
Gene Symbol	<a href="#">RPS24</a>
UniProt ID	<a href="#">RS24_HUMAN</a>
Immunogen Region	1-130
Immunogen Sequence	MNDVTVTRTRKFMTRLLQR KQMVIDVLHPGKATVPKTEI REKLAKMYKTPDVIVFVGF RTHFGGGKTTGFGMIYDSL D YAKKNEPKHRLARHGLYEKK KTSRKQRKERKNRMKKVRGT AKANVGAGKK
Specificity	Recombinant fusion protein containing a sequence corresponding to amino acids 1-130 of human RPS24 (NP_148982.1).

### ADDITIONAL INFORMATION

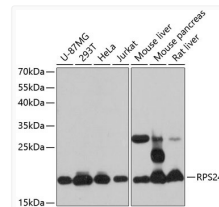
Note **STRICTLY FOR FURTHER SCIENTIFIC RESEARCH USE ONLY (RUO). MUST NOT TO BE USED IN DIAGNOSTIC OR THERAPEUTIC APPLICATIONS.**



Immunoprecipitation analysis of 200 Mu g extracts of HeLa cells using 3 Mu g RPS24 antibody (STJ114017). Western blot was performed from the immunoprecipitate using RPS24 antibody (STJ114017) at a dilution of 1:1000.



Immunohistochemistry analysis of RPS24 in paraffin-embedded rat brain using RPS24 Rabbit polyclonal antibody (STJ114017) at dilution of 1:200 (40x lens). Perform high pressure antigen retrieval with 10 mM citrate buffer pH 6.0 before commencing with immunohistochemistry staining protocol.



Western blot analysis of various lysates using RPS24 Rabbit polyclonal antibody (STJ114017) at 1:3000 dilution. Secondary antibody: HRP Goat Anti-Rabbit IgG (H+L) (STJS000856) at 1:10000 dilution. Lysates/proteins: 25 Mu g per lane. Blocking buffer: 3% nonfat dry milk in TBST. Detection: ECL Basic Kit. Exposure time: 30s.