

Anti-MKLN1 antibody (436-735) (STJ114010)

GENERAL INFORMATION

Product Type	Primary antibodies
Applications	WB/ELISA
Host / Source	Rabbit
Reactivity	Mouse

PRODUCT PROPERTIES

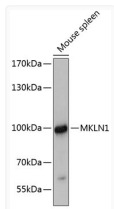
Clonality	Polyclonal
Concentration	Lot specific
Conjugation	Unconjugated
Purification	Affinity purification
Dilution Range	WB:1:500-1:1000 ELISA:Recommended starting concentration is 1 µg/mL. Please optimize the concentration based on your specific assay requirements.
Formulation	PBS with 0.01% Thimerosal, 50% Glycerol, pH 7.3.
Isotype	IgG
Molecular Weight	Protein Mw: 85kDa Observed Mw: 100kDa
Storage Instruction	Store at -20°C for up to 1 year from the date of receipt, and avoid repeat freeze-thaw cycles.

TARGET INFORMATION

Gene ID	4289
Gene Symbol	MKLN1
UniProt ID	MKLN1_HUMAN
Immunogen Region	436-735
Immunogen Sequence	QTWKLLREDSNAGPEDIQS RIGHCMLFHSKNRCLYVFGG QRSKTYLNDFFSYDSDHV DIISDGTKKDSGMVPMTGFT QRATIDPELNEIHVLSGLSK DKEKREENVRNSFWIYDIVR NSWSCVYKNDQAAKDNPTKS LQEEPCPRFAHQLVYDELH KVHYLFGGNPGKSCSPKMRL DDFWSLKLCRPSKDYLLRHC KYLIRKHRFEEKAQVDPLSA LKYLQNDLYITVDHSDPEE
Specificity	Recombinant fusion protein containing a sequence corresponding to amino acids 436-735 of human MKLN1 (NP_037387.2).

ADDITIONAL INFORMATION

Note **STRICTLY FOR FURTHER SCIENTIFIC RESEARCH USE ONLY (RUO). MUST NOT TO BE USED IN DIAGNOSTIC OR THERAPEUTIC APPLICATIONS.**



Western blot analysis of lysates from mouse spleen, using MKLN1 Rabbit polyclonal antibody (STJ114010) at 1:3000 dilution. Secondary antibody: HRP Goat Anti-Rabbit IgG (H+L) (STJS00856) at 1:10000 dilution. Lysates/proteins: 25 µg per lane. Blocking buffer: 3% nonfat dry milk in TBST. Detection: ECL Enhanced Kit. Exposure time: 90s.